

CAFRE Herd Milk Quality

	2009	2010	2011	2012	2013	2014	2015	2016	2017	2018	2019
Butterfat (%)	4.35	4.36	4.30	4.35	4.23	4.16	4.13	4.15	4.19	4.20	4.16
Protein (%)	3.38	3.45	3.42	3.36	3.29	3.28	3.28	3.29	3.34	3.37	3.35
SCC (' 000)	123.6	135.1	126.3	131.2	124.8	120.7	119.8	144.8	154.0	104.6	154.3
Bactoscan	29.3	28.5	33.0	17.7	15.0	15.7	19.3	17.9	24.5	24.8	24.3

Table 1. Milk quality in the CAFRE Herd across an 11 year period

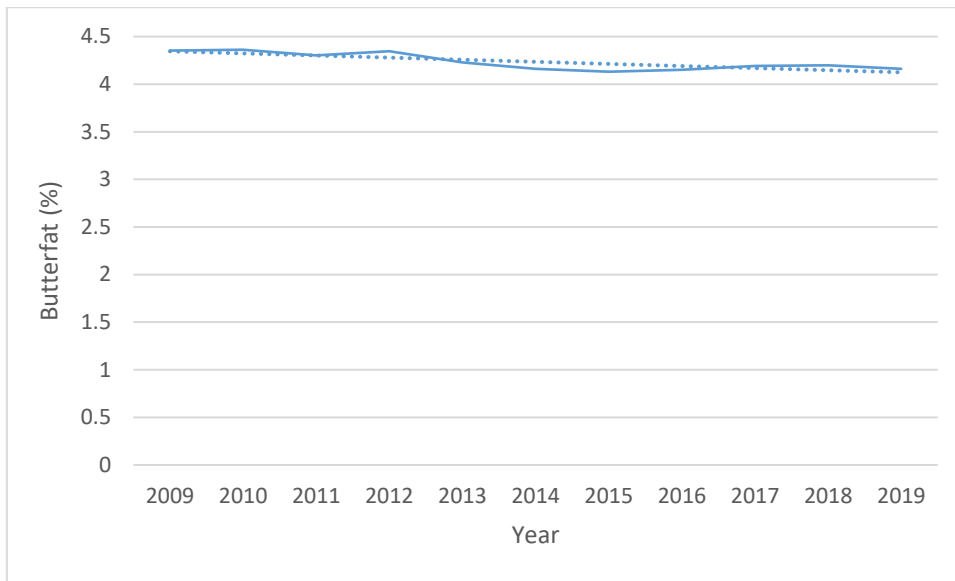


Figure 1. Trends in Butterfat (%) in the CAFRE Herd across an 11 year period

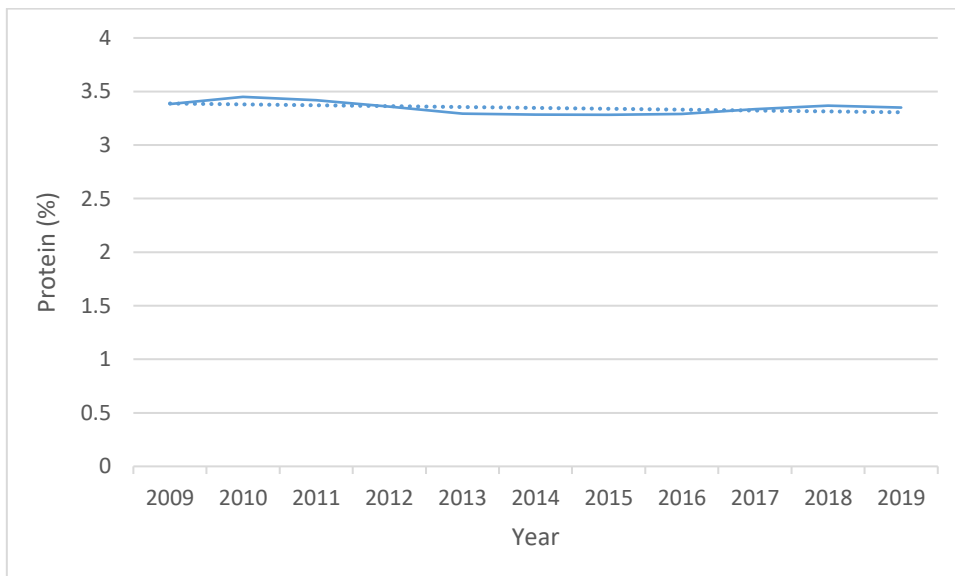


Figure 2. Trends in Protein (%) in the CAFRE Herd across an 11 year period

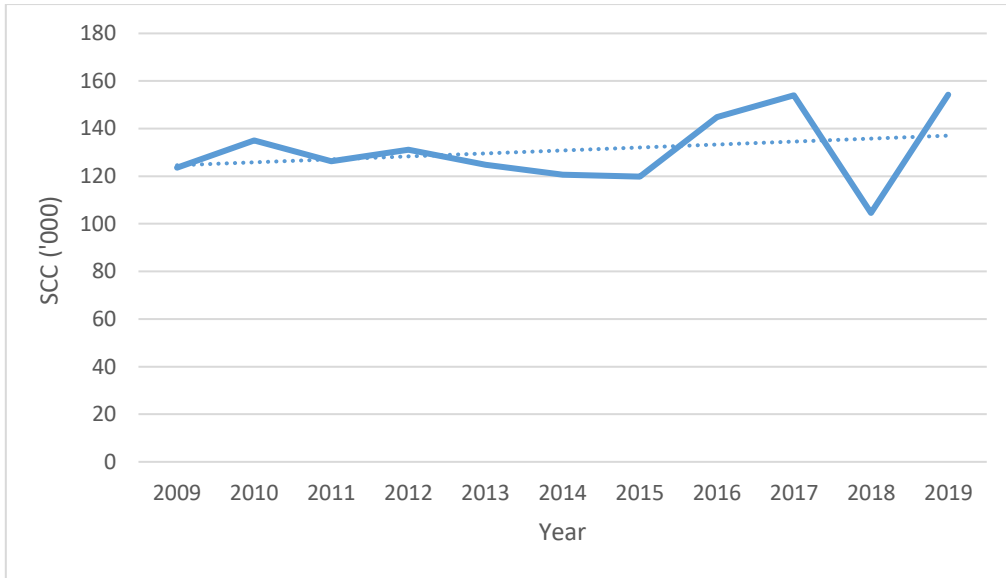


Figure 3. Trends in Somatic Cell Count ('000) in the CAFRE Herd across an 11 year period

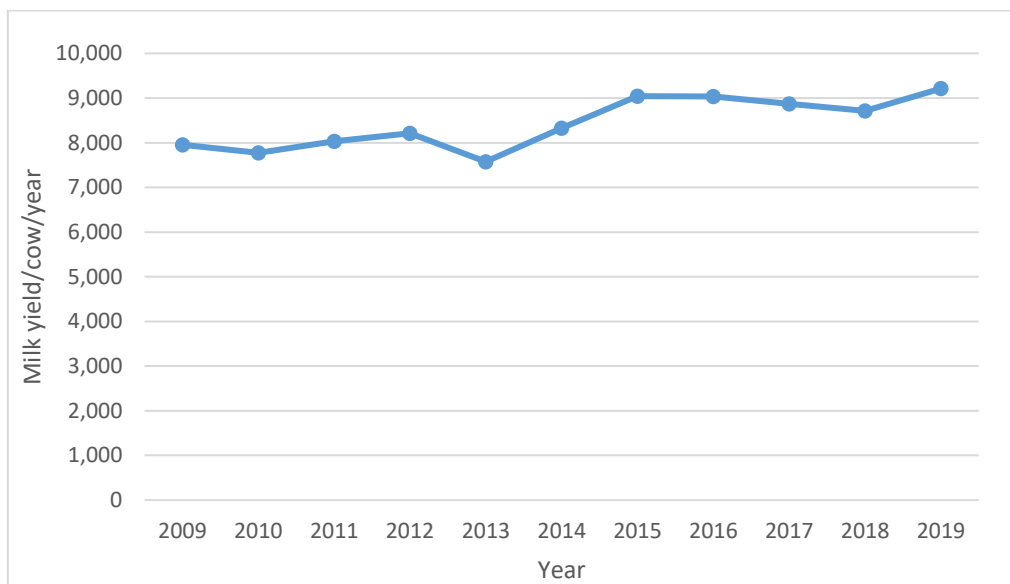


Figure 4. Trends in Milk Yield/cow/year in the CAFRE Herd across an 11 year period

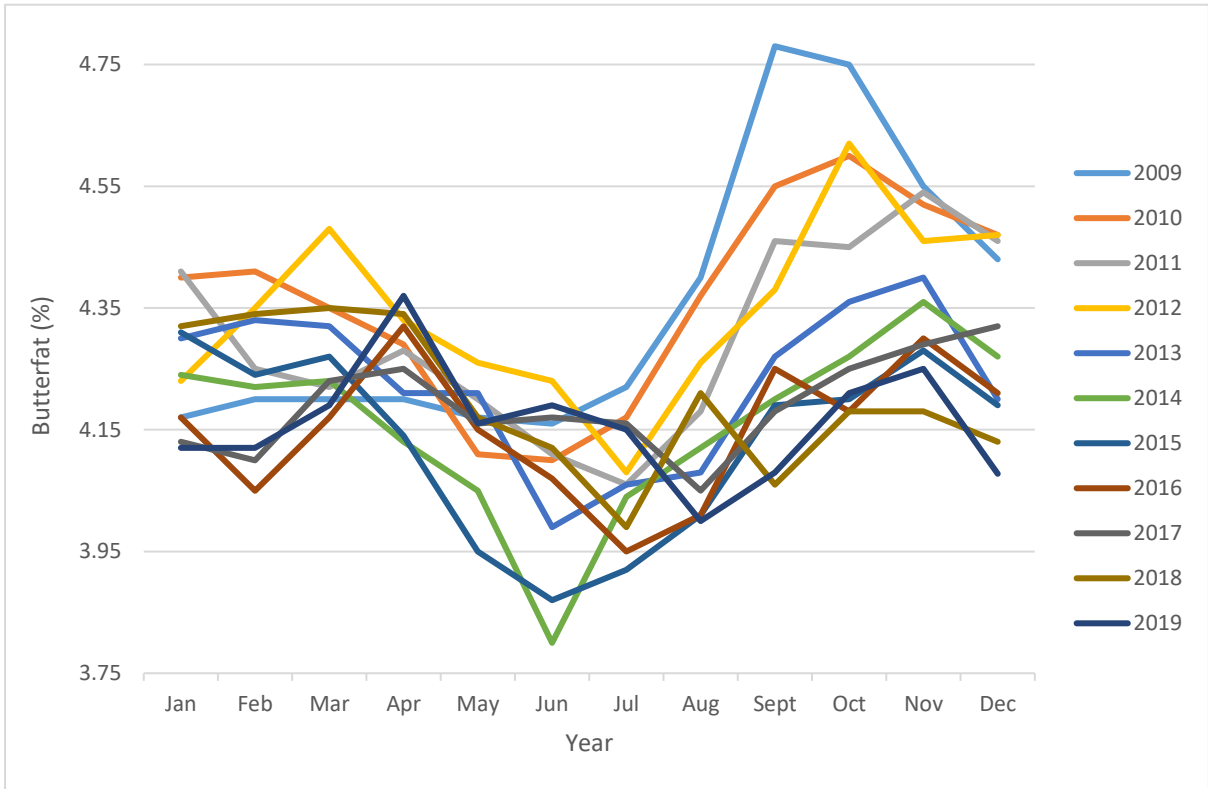


Figure 5. Trends in monthly Butterfat (%) in the CAFRE Herd across an 11 year period

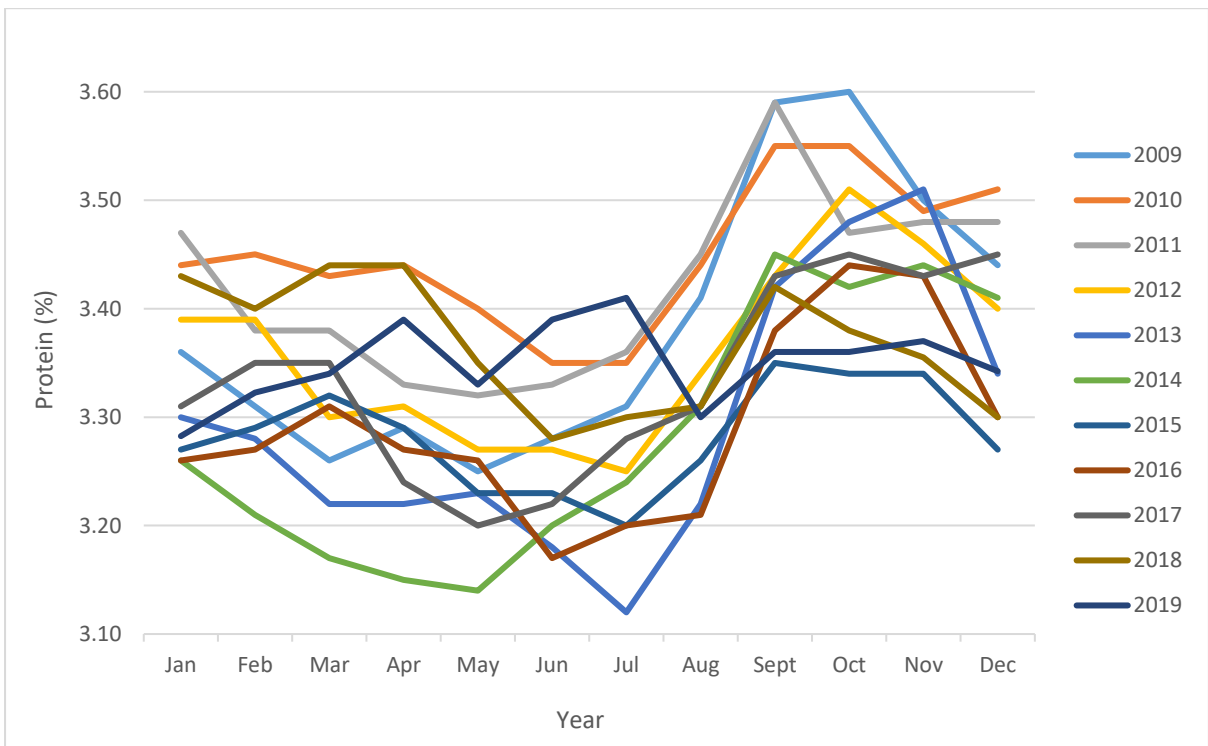


Figure 6. Trends in monthly Protein (%) in the CAFRE Herd across an 11 year period

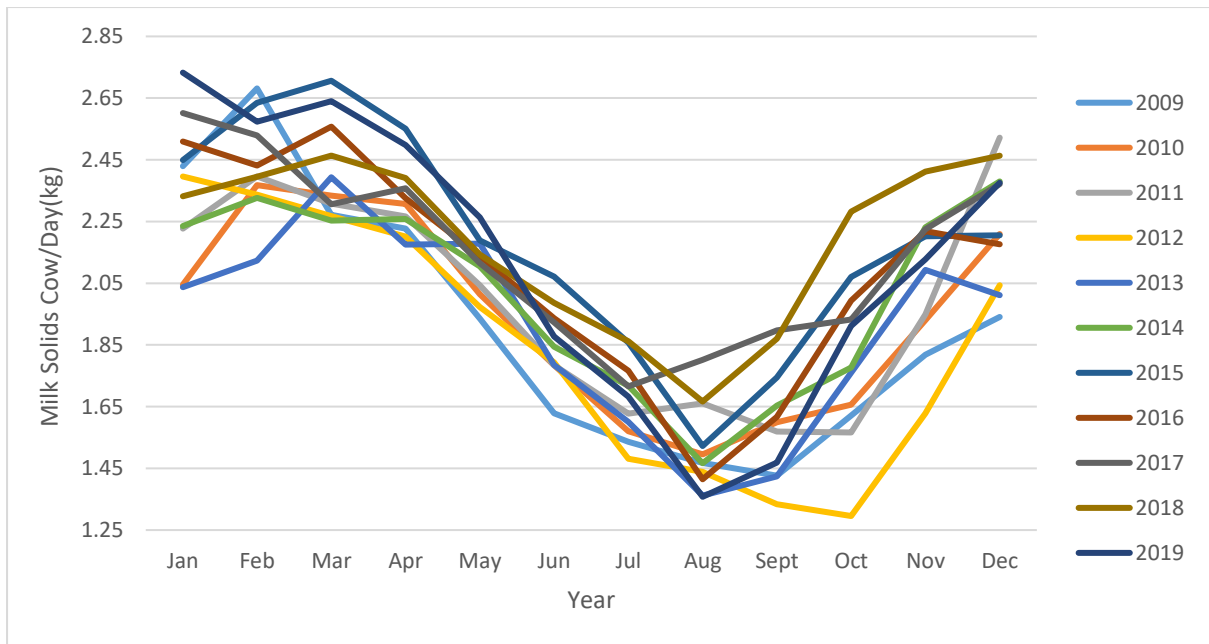


Figure 7. Trends in monthly Milk solids/cow in milk/day (kg) in the CAFRE Herd across an 11 year period

	2009	2010	2011	2012	2013	2014	2015	2016	2017	2018	2019
Total milk (litres)	93558	92491	93147	93749	98517	108627	115017	112099	136126	148095	149769
Yield/cow in milk/day	24.92	24.89	25.83	24.03	25.41	27.15	29.42	28.06	28.54	28.90	28.29
Milk solids/cow/day (kg)	1.92	1.94	1.99	1.85	1.91	2.02	2.18	2.09	2.15	2.19	2.13
Concs/cow	159.1	180.2	178.4	172.6	184.9	187.4	232.2	195.4	228.7	233.0	234.7
Concs/litre (kg/l)	0.25	0.27	0.26	0.27	0.28	0.26	0.30	0.26	0.31	0.32	0.32
Cows in herd	145	140	136	144	150	151	150	150	186	200	202

Table 2. CAFRE Herd production parameters over the previous 11 year period