

- ◆ Greenmounts key heifer rearing target is calving at 24 months of age.
- ◆ One of the CAFRE dairy herd targets is to achieve a lifetime performance of 40,000 litres/cow.
- ◆ How does this target compare with the current Northern Ireland average?
- ◆ What are the attributes of herds with the highest lifetime performance?

AVERAGE FINDINGS

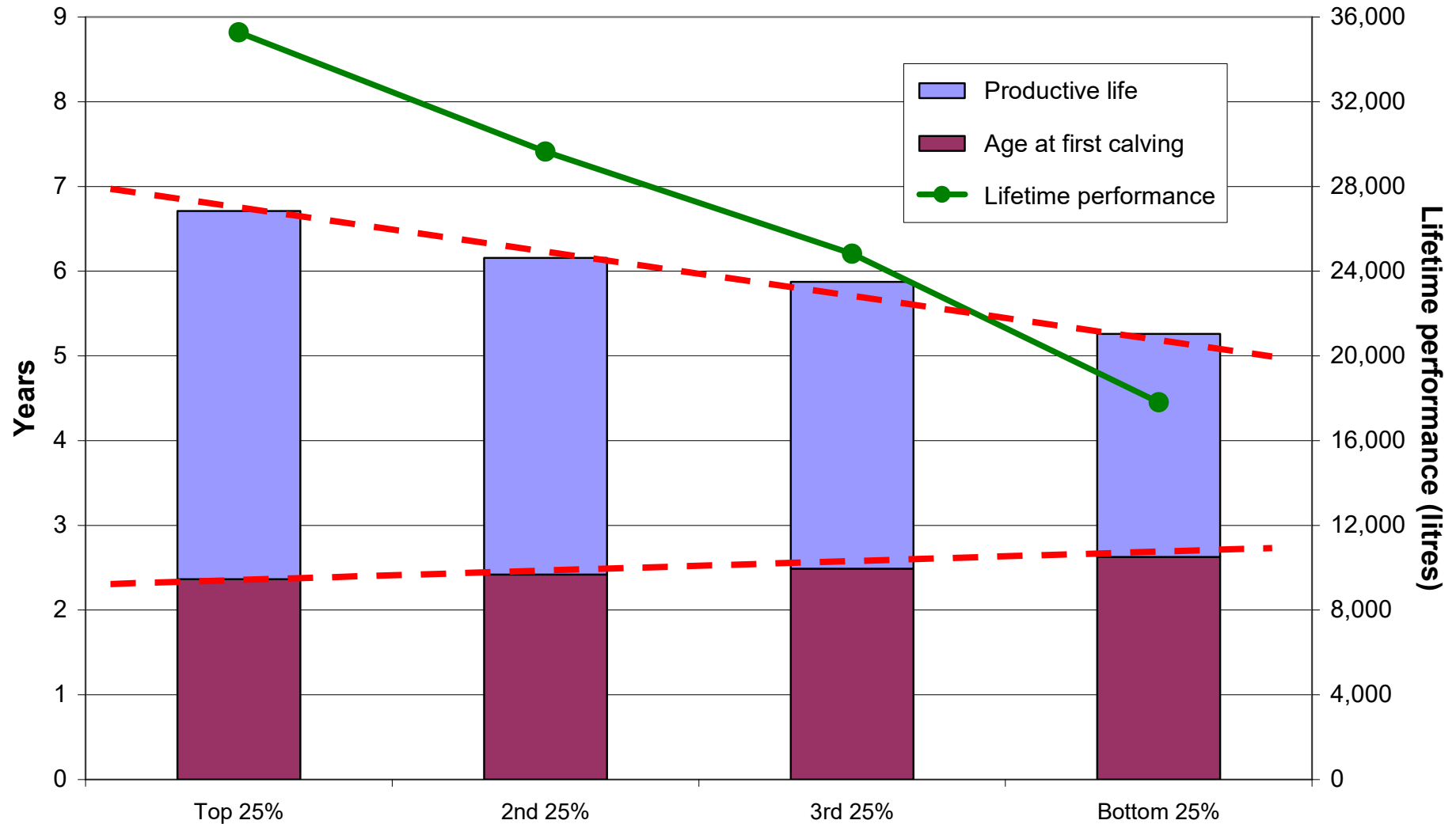
	N. Ireland average	CAFRE Dairy Herd
Lifetime yield (litres)	27,600	38,398
Average longevity (years)	6.1	6.3
Age at first calving (months)	30	24.4
Productive life (years)	3.6	4.3
Lifetime yield (l/day prod life)	21.5	23.4
Lifetime yield (l/day total life)	11.1	14.4
Lactation no. at culling	3.6	4.3
DIM at culling	259	236
Average calving interval (days)	423	398

LIFETIME PERFORMANCE

- Analysis of herds in 25% bands

	Top 25%	Second 25%	Third 25%	Bottom 25%
No. herds	170	170	170	170
No. cows	12,186	14,311	13,357	8,549
Lifetime yield (litres)	35,269	29,632	24,804	17,770
Age at 1 st calving (months)	28.5	29	30	31.5
Longevity (years)	6.71	6.15	5.87	5.26
Productive life (years)	4.35	3.73	3.38	2.63
DIM at culling	273	266	252	247
Lactation no. at culling	4.2	3.6	3.4	2.7
Lifetime fat%	3.90	3.92	3.95	3.98
Lifetime protein%	3.22	3.24	3.24	3.25
Average lactation yield (litres)	8,390	7,909	7,000	6,146
Lifetime yield (l/day total life)	13.2	11.9	10.3	8.2
Lifetime solids yield (kg)	2,489	2,103	1,768	1,277
Average calving interval	424	424	421	421

Lifetime Performance - Analysis of herds in 25% bands



- ◆ Lifetime performance of the CAFRE Dairy Herd (38,398 litres) exceeds Northern Ireland average of 27,600 litres.
- ◆ While longevity similar to NI average, Future Herd has longer productive life as result of heifers calving earlier.
- ◆ Herds with highest lifetime yield have:
 - Higher average lactation yield
 - Longer productive life (↑ longevity, ↓ age at first calving)
- ◆ In herds of similar lifetime yield:
 - considerable variation in longevity and average lactation yield
 - negative correlation between longevity and average lactation yield

ACKNOWLEDGMENTS



CAFRE would like to acknowledge both Dale Farm Dairy Herd Management and Holstein UK for providing the data on which to conduct this technology investigation.