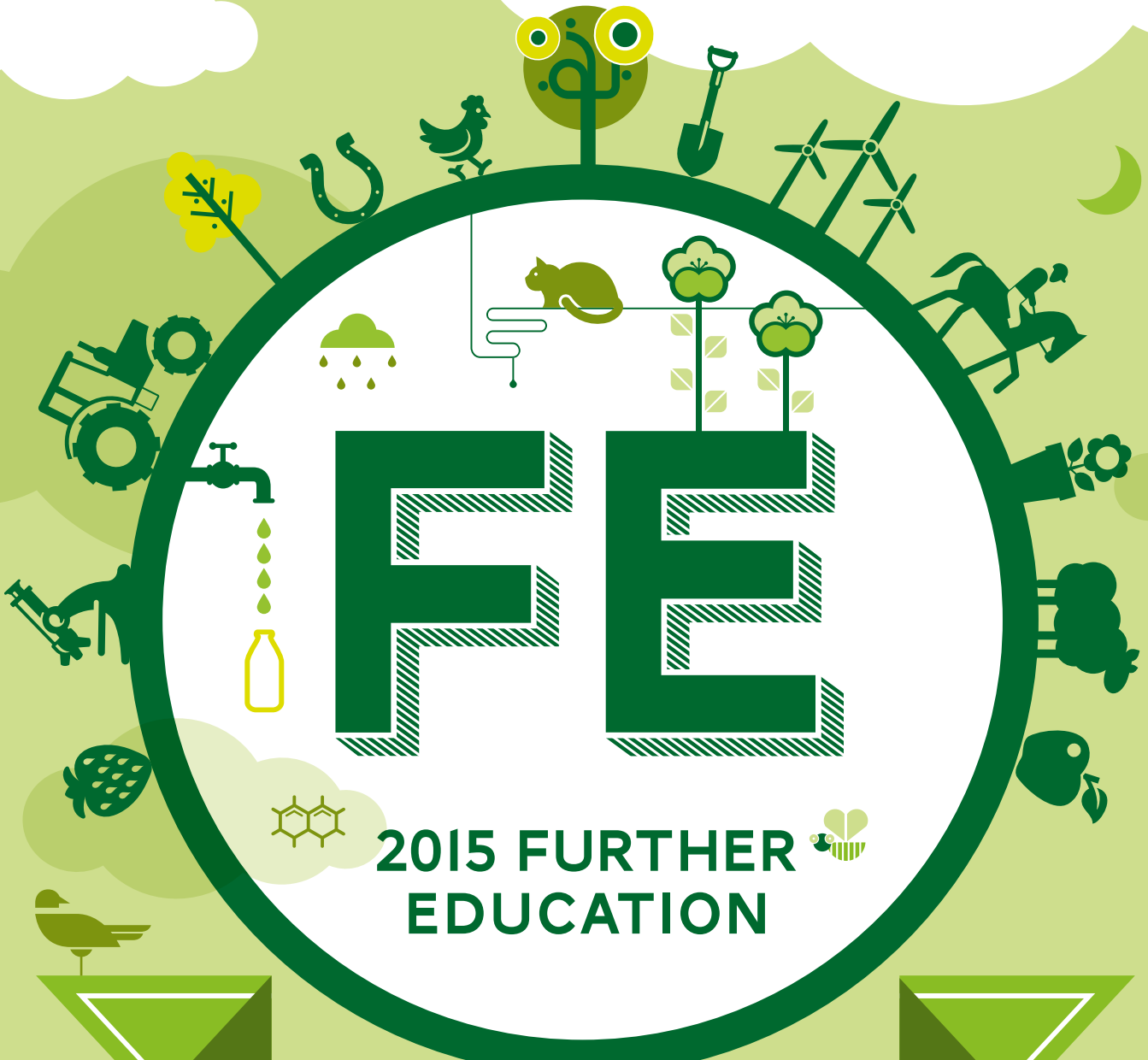


College of Agriculture,
Food & Rural Enterprise



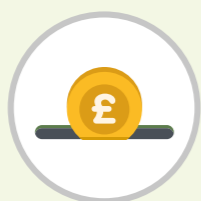
PROSPECTUS



CONTENTS



06 Why choose CAFRE?



08 Investing in your future



12 Hands-on experience



22 Apprenticeships



24 How to apply



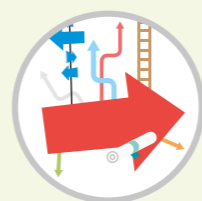
26 Entry requirements



14 Industry links



14 Work placements



15 Look to the future



28 Student support services



30 Courses



138 Important information and legal info



16 Having fun on campus



18 Accommodation



20 Money matters



140 Open days



142 Campus locations

Reach your potential in your chosen career



Welcome

FE

PROSPECTUS

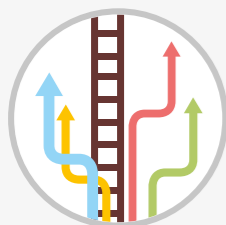
Studying a course that will lead you to job success is what every student wants. Our courses will develop skills and knowledge in land-based and food courses, to give our students good job prospects and help them reach their potential in their chosen careers.

In 2013, over 94% of our students who completed their course were in employment or had progressed onto further education within six months. Studying with us will equip you with employability skills for life!

JOHN FAY
CAFRE DIRECTOR



WHY CHOOSE CAFRE?



Great job prospects

Students of all ages study at CAFRE because they're interested in getting a good job at the end of their course. Our results speak for themselves – in 2013 over 94% of our students were in employment, on a gap year or had progressed onto further education.



Industry links

CAFRE has excellent links with businesses and organisations, many of which employ our graduates. They show their support by providing work placements, delivering guest lectures and offering real-life course projects.



Financial support

Studying at CAFRE is not as expensive as you might think. The Further Education courses in this prospectus are funded by the Department of Agriculture and Rural Development and most students are eligible for that funding. Our accommodation and living costs are low and, if you are a Northern Ireland resident, you can apply for a means-tested living expenses grant.



Opportunities to progress onto higher courses

On completion of a Level 2 course you can progress onto a Level 3 course. Having completed that course successfully, you could consider a Foundation Degree or Honours Degree. It's possible to progress to the next level if you get good grades in the course you have just completed.



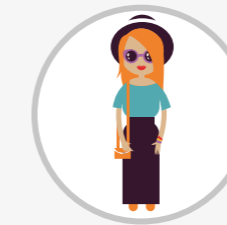
Practice makes perfect

If you're a hands-on type of person who doesn't want to be stuck behind a desk all day, then CAFRE courses, and the careers which they lead to, are perfect for you. Relevant practical experience in modern specialist facilities is a part of all courses.



Specialist facilities

You'll go far to find better facilities to study for courses in agriculture, agricultural engineering, horticulture, floristry, food, veterinary nursing or equine studies than those at CAFRE. With ongoing investment, we keep our facilities up-to-date to benefit not just our full-time students but also people from industry, who continue their professional development through our short courses.



Small and special

You are treated as an individual at CAFRE as staff know all of the students at our campuses. Staff are friendly and approachable and make sure that you are supported both personally and academically to achieve your potential.



One of the great things about CAFRE is that each of our three campuses delivers a specific range of courses and has the specialist facilities to match. We've invested in our buildings, equipment and resources so you can get the most out of your time with us. Get ahead of the competition with the practical skills you learn on our courses.



Food fantastic

We're very proud of our Food Technology Centre at Loughry Campus, the largest facility of its kind in the island of Ireland. It's a modern food manufacturing facility designed to show best practice across all the main food product sectors, such as fruit and vegetables, meat, dairy and bakery. It's also equipped with product development and food testing facilities, a retail outlet, computer suites, a library and modern lecture rooms – everything you'll need on your food course.

Food packaging supports a multi-million pound industry, which you might want to work in. We've a Packaging Centre at Loughry Campus which is used by industry personnel from all over Ireland and by our students, of course.

All things equine

At Enniskillen Campus you'll find indoor and outdoor arenas for all aspects of equitation. In the racing yard we give potential jockeys invaluable experience in handling and riding racehorses. Students make use of the gallops, which include a strenuous uphill section, and the schooling track, where they experience the thrill of riding a racehorse over fences at speed. While working in the purpose-built breeding unit students handle and manage the thoroughbred and sport horse brood mares and their young stock. They participate in the foaling rota, which can be either a quiet night or a very full-on experience, and have the opportunity to prepare and take the weanlings to the sales.

The equitation unit has a range of horses to meet the students' needs and the equitation club attends working hunter competitions, cross country schooling events and Balmoral. Some of the student year groups organise in-house competitions and demonstrations.

Green boots

Greenmount Campus is the centre of all things green – that's agricultural, horticultural and environmental. The 200 hectares around the campus are used for arable, dairying and lowland beef farming. We have just recently built a state-of-the-art dairy unit for 180 cows with all the latest technologies in comfort housing and cow handling, waste management and parlour recording system. Another 1,100 hectares of hill land carrying 1,100 ewes and 100 suckler cows, is managed in an environmentally sustainable manner to promote wildlife and protect habitats. Both farms are used by CAFRE technologists and advisers to demonstrate and promote the latest advances in agriculture and land use. Students get involved in these projects too.

We also have a constructed wetlands system, which acts in a similar manner to the bio-filtration action of natural wetlands. There we channel waste water from the farm through a series of five ponds and at the end it is of good enough quality to release into a stream. Students use this site in their environmental science work.





We've
invested
so you
can get
the most
out of
your time
with us...



Green fingers

Greenmount Campus itself is set in 18 hectares of landscaped grounds, originally laid out in the 19th century. The walled garden, built in 1801, is a major horticultural attraction with its conservatory, knot garden, maze, and fruit garden. Sportsturf enthusiasts will appreciate the six hectares devoted to playing fields and to the Greenkeeping and Golf Academy, with its driving range and three hole course.

Staff at the Horticulture Development Centre work with students and industry personnel in the modern production facilities for ornamental and edible crops. These include environmentally-controlled glass houses with ebb and flow floors, automatic venting, water recycling and a biomass boiler.

Machinery and Building Centre

Our Machinery and Buildings Centre allows agriculture and horticulture students to carry out all their machinery and building activity in one specialist facility. It contains three fully equipped workshops for machinery maintenance, a series of welding/construction booths, a 'soil shed' and a buildings demonstration facility for estate skills, as well as teaching rooms and IT facilities.

Access all (I.T.) areas

Once you're enrolled at CAFRE you're given your password to the student intranet, an on-line learning environment, that's the place to go for accessing lecture notes and other resources, submitting assignments, completing assessments and communicating with your lecturers. There's also an on-line storage system for all your downloads. You will have lots of access to the many computer suites located around each campus, some of which have specialist applications, such as Computer Aided Design (CAD) and Geographical Information Systems (GIS). Business recording programmes will give you the latest performance data on the farm enterprises.

Although we have top of the range IT facilities, we still need books so we have libraries with all the necessary specialist journals, technical reports and newspapers to help with those projects and assignments.

High-Tech stuff

Many of our courses teach you the science you'll need in your career, so we have up-to-date laboratories where you can carry out biological, chemical and physical analyses on crop, livestock and food products. If you're looking for spectrophotometers and texture analysers or electrophoretic equipment, you'll know where to find them.





CAFRE courses are designed to prepare you for a job in real life - so no more sitting in a classroom all day. We combine lectures and tutorials with practical sessions to allow you to apply what you've learned to real situations. Assignments and case studies will teach you how to solve problems that occur in everyday business.

Getting your hands dirty

Want to produce flowers to sell? Or work with a high genetic merit dairy herd? Or look after breeding mares? We are one of the few colleges in the UK to offer such a hands-on learning experience. Our extensive practical facilities are widely used by all students, who really put 'learning-by-doing' into practice, and along the way gain the skills that put them ahead in the job stakes.

Equine students get involved in the business units at Enniskillen Campus; breeding, equitation and racing, making decisions with support and advice from industry representatives. You can't get better hands-on experience than spending months preparing foals for the sales and then taking them right through to the sales ring.

Students at Loughry Campus are involved in the production and retailing of food products in the Food Technology Centre. Ever wanted to design and produce a new food product that actually makes it to the supermarket shelves? Well food students do just that through a New Product Development (NPD) competition sponsored by a leading food company. There's also the chance to have your say on food products in the sensory perception facilities.

Horticulture students produce and retail garden centre plants, such as poinsettias at Christmas and work on landscaping projects.

Agriculture students are involved in the day-to-day running of the farm enterprises, including the CREAM dairy herd, one of the top yielding milk recorded herds in Northern Ireland.

Additional qualifications

In an increasingly competitive job market, you can add to your employability prospects at CAFRE by doing additional qualifications that are valued by industry. While studying, you can enhance your job prospects by achieving qualifications such as the Chartered Institute of Environmental Health (CIEH) Food Safety Certificate, the National Proficiency Test Council (NPTC) Pesticide Application Certificate and British Horse Society (BHS) qualifications.

INDUSTRY LINKS

The connections you make on your course can help you get a great job after (or sometimes before) graduating. In the search for a job, CAFRE students benefit from our excellent links with businesses and organisations in all the land-based and food industries.

We involve people from the world of work in everything that we do, from the industry experts who sit on our College Advisory Group to the specialists who advise students on the management of enterprises or projects. This means that our course content is current and relevant to industry because we seek their feedback and take their opinions on board.

Work placements

There's no better way to boost your CV than through an impressive work placement. Some of our students make such a good impression on placement that they get offered a job before finishing their course.

On work placement you'll find out what it's really like to work in your chosen industry. It will help you develop your interpersonal and communication skills and improve your organisational abilities.

We encourage you to spend your work placement in a number of places so that you get the chance to sample several jobs. You can go abroad or stay closer to home if you wish.

Many businesses contact us looking for our good quality placement students. We can help you get your placement organised or you can use your own contacts.

Get some work placement ideas from our past students. They have worked as:

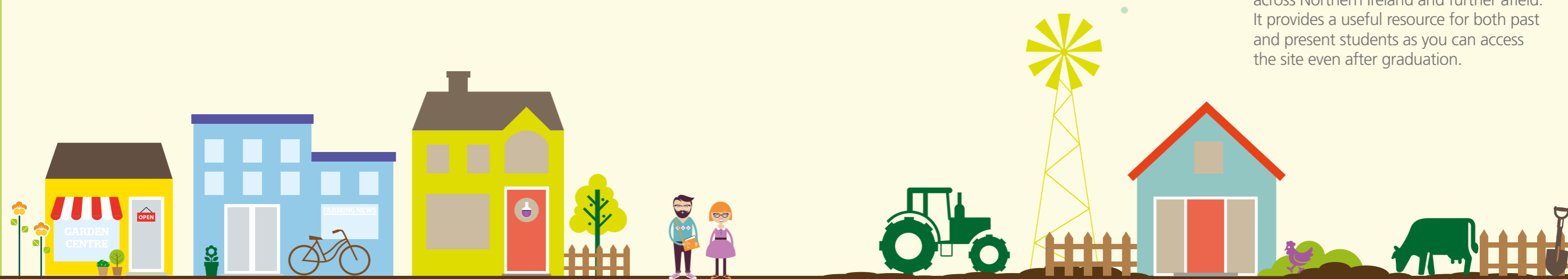
- Assistant farm managers
- Product development assistants
- Dairy stockpersons
- Foaling assistants
- Shepherds
- Process improvement officers
- Laboratory technicians
- Garden centre assistants
- Racehorse and competition riders and grooms
- Trainee fitters
- Landscape workers

LOOK TO THE FUTURE

We'll help you prepare for your future after graduation in a number of ways; you'll get training on how to write an eye-catching CV, assistance in interview preparation and even practice at mock interviews. Some of this training starts in the first year of your course to help you obtain a good work placement.

In the final year of your course you'll get a chance to meet potential employers at a careers fair, organised by each campus every spring. Students can talk to employers and pick up employability and interview tips from seminar speakers. It's a great opportunity to find out what employers are looking for and what will help you stand out from the crowd.

Companies are aware of the high calibre of CAFRE graduates and keep us informed when they are advertising vacancies. We have a jobs section on our website, www.cafre.ac.uk, which lists the jobs available in our specialist subject areas right across Northern Ireland and further afield. It provides a useful resource for both past and present students as you can access the site even after graduation.





Our three campuses are set in tranquil rural surroundings, with rolling countryside, birds singing and the occasional bleating of sheep. Sounds idyllic doesn't it, but what do the students get up to when classes are over?



HAVING



From Induction Week onwards you'll make new friends and quickly start to socialise both on and off campus. All of our campuses are near local towns and you'll soon hear of trips organised for fun further afield.

The Students' Council

Representatives from each class are elected to the Students' Representative Council (SRC) at each campus. Each SRC organises a lively programme of social events throughout the year, including bowling and karting, and supports local charities through fundraising events. The highlight of the year is the Student Formal, held at each campus, when students dress up and let their hair down at the same time.

The clubs for sports and other activities vary from campus to campus, depending on the interests of the students. Students at Enniskillen Campus make use of the equine facilities which includes three yards – equitation, racing and breeding. There are a number of clubs and members attend a range of competitions, races and sales. Livery is available for a limited number of student horses. Students with their own horses can access the horse walker, hacking track, indoor and outdoor arenas after hours.

Both Greenmount and Loughry Campuses have Gaelic, Soccer and Rugby pitches and Greenmount also features a four hole golf course and practice range as part of the Greenkeeping and Golf Academy. Loughry students have access to the Mid Ulster Sports Arena, a modern outdoor facility on the edge of the campus owned and run by Cookstown District Council. It includes grass and all-weather pitches, an endurance area incorporating a multi-use games area suitable for a wide range of sports, a strength and conditioning room and a 1,400m trim trail.



Not all students live on campus, but those who do enjoy modern, competitively-priced accommodation with an attractive range of amenities, laundry and recreational facilities. Priority for on-site accommodation is given to students under 18 years of age, students with special needs and first year students.



Accommodation costs

It would be difficult to find better value student accommodation at any other college in the UK. The cost varies depending on the type of accommodation allocated but will fall within the region of £1,350-£1,900. Remember these charges include heating and electricity.

Meals

Our modern dining rooms and snack bars offer food and drinks throughout the day. To help you budget, you can opt to use an electronic prepaid card to pay for the food that you buy on campus.

Life on campus - home from home

At Greenmount Campus, 100 students aged under 18 are accommodated in Halls of Residence and a further 110 rooms are available for students aged over 18 in the self-catering village blocks and small bungalows. Greenmount students can use the sports hall and multi-gym, together with a number of football pitches, the golf driving range and the mini golf course at the Greenkeeping and Golf Academy.

Loughry Campus accommodates 95 students in single study bedrooms. Students have free access to the Mid Ulster Sports Arena, a modern outdoor facility on the edge of the campus. It includes grass and all weather pitches, an endurance area incorporating a multi-use games area, a strength and conditioning room and a 1,400m trim trail.

Enniskillen Campus has accommodation for 70 students in single study bedrooms and student bungalows. Students can use the multi-gym as well as the recreation room which includes pool tables, air hockey and table tennis. In addition, they are encouraged to help develop their fitness by using the dressage and two racing simulators on site.

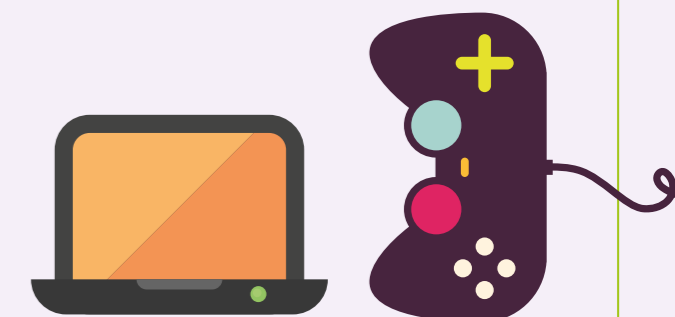
Accommodation Managers

Accommodation staff at each campus are always on-hand to offer advice and assistance should you need it.

Sharon Armstrong
and Michelle McKenna
Enniskillen Campus
Tel: 028 6634 4832

Brian Simpson and Barry Kelly
Greenmount Campus
Tel: 028 9442 6650
Tel: 028 9442 6911

Judith Mullan
Loughry Campus
Tel: 028 8676 8139





Studying a course at CAFRE does not cost as much as you might think



There are no fees for CAFRE Further Education courses so your main expenses will be your accommodation and living costs.

DARD funding

CAFRE is part of the Department of Agriculture and Rural Development (DARD) and most students enrolled on Further Education courses at CAFRE are eligible for funding by DARD. However if you have previously undertaken a publicly funded Further Education course in the United Kingdom you will not normally be eligible for funding for a CAFRE course at the same or lower level.

Accommodation and living costs

Depending on the type of accommodation allocated, you can budget on your CAFRE accommodation costing in the region of £1,350 - £1,900 each year. This compares very favourably with other colleges.

What financial support is available?

If you are a Northern Ireland resident you can apply for a means-tested living expenses grant of £1,659 per year for students living at home and £2,362 per year for students living away from home.

DARD's financial support is administered by the Further Education Awards Section of Student Finance NI. A DARD booklet called "Further Education Financial Support for Students" explains the details of this financial support and you can obtain a copy from CAFRE's Admissions Office or Student Finance NI in the Western Education and Library Board (WELB). You can also download this information from www.dardni.gov.uk or www.welbni.org

Additional support

There are other grants and allowances available to help you with the cost of undertaking your course if you have a disability or dependants. Information on all these grants and allowances, and how and when to apply, can be found in the DARD booklet.

For more information on financial support for full-time Further Education courses at CAFRE please contact:

Student Finance NI
Further Education Awards Section
Western Education and Library Board
1 Hospital Road
Omagh
BT79 0AW

Tel: (028) 8225 4546
Email: feawards@welbni.org





What is an apprenticeship?

An apprenticeship is a work-based training programme where you are employed in your chosen vocation and earning a wage as well as attending off-the-job training.

CAFRE provides off-the-job training in the knowledge and skills required, usually on a day release basis, while you have the opportunity to practise and further develop these skills on the job.

Apprenticeships are open to those already in employment who wish to up-skill and develop within their existing job role and to new employees aged 16 and over.

They lead to nationally recognised qualifications, which are tailored to your needs and those of your employer.

Apprenticeships are available at Level 2 and 3. Your entry level will depend on your experience and your role with your employer.

What are the benefits of enrolling on an Apprenticeship?

If you are a school leaver, apprenticeships will provide you with an attractive alternative to academic courses, where you can develop knowledge and skills in a practical environment whilst working in the industry.

If you are in employment, it will provide you with an opportunity to further develop your skills in a practical environment, whilst continuing in employment.

For the employer, apprenticeships raise the professional and technical skills of their staff. Employers are eligible for a cash incentive (£500-£750 depending on the vocational area) when their employee fully completes the apprenticeship framework.

What do Apprenticeships include?

Apprenticeships usually take between two and three years to complete depending on your level of study.

They include:

- a Work-based Diploma programme in your chosen area. These are practical, hands-on courses designed to teach you the knowledge and skills needed to work in your chosen vocational area. They are competence based, and are usually assessed in the workplace.
- additional qualifications relevant to the sector. These may include emergency first aid, use of a pesticide sprayer or use of specialist equipment such as a materials handler.
- Essential Skills qualifications in numeracy, literacy and ICT.
- a knowledge of employment rights and responsibilities (ERR).
- employability skills.

All training and additional qualifications are provided free of charge.

Apprenticeships with CAFRE

CAFRE will be offering Apprenticeships in the following areas, subject to demand:

- Agriculture
- Amenity Horticulture
- Equine Industry
- Food and Drink (manufacture)
- Veterinary Nursing

Within Food and Drink, options include:

- Bakery
- Dairy
- Food Manufacturing Excellence
- Fresh Produce
- Meat and Poultry

How do I apply?

You can apply on-line at www.cafre.ac.uk

Eligibility criteria

To be eligible to enrol on an apprenticeship programme you must be:

- in paid employment in Northern Ireland
- working a minimum of 21 hours per week
- over the minimum school leaving age

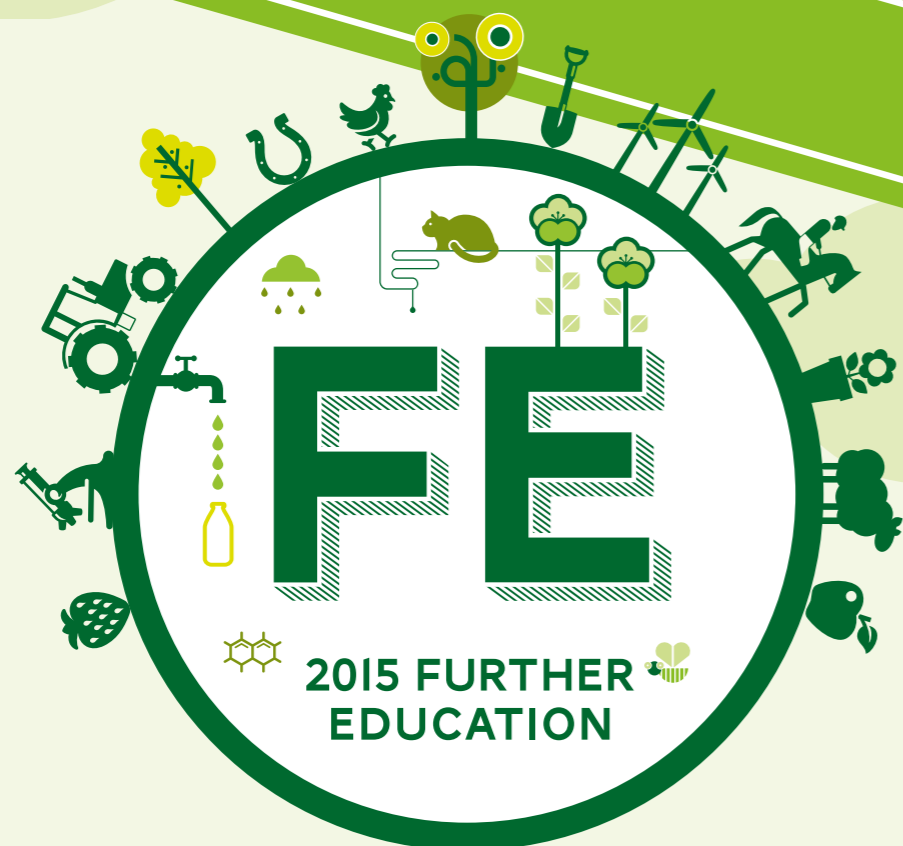
Or

- about to take up paid employment

In addition, you must meet the entry requirements of your chosen vocational area. Further details of these are given on the course pages through this prospectus.

HOW TO APPLY FOR A

CAFRE COURSE



Applying to CAFRE



So you've decided that a CAFRE course is right for you. What next?

You can apply to CAFRE on-line for any of the courses listed in this prospectus:

www.cafre.ac.uk

Students must be at least 16 years of age on or before 1st July in the year they propose to enrol on the course.

You can apply for more than one course, but you must indicate your course preferences by ranking their order on your application. We will acknowledge receipt of your application form within seven days.

What happens next?



You will be invited to attend a short careers interview at the campus of your choice and view the teaching, practical and accommodation facilities. If you are successful in your application you will be made an offer of a place on a course but this may be conditional on achieving minimum examination results and/or undertaking work experience. A letter will be sent to you within five working days of the interview.

As soon as you receive your examination results you should contact the College to check if your conditional offer can be confirmed. You can contact us for information or advice at any time during the application process. When your offer is confirmed and you inform us that you are accepting a place at CAFRE, we will send you details of accommodation, timetables and any protective clothing or equipment that you may require.

Applications for a course will only be accepted from 1st October of the year preceding the year in which you expect to enrol.

If courses are oversubscribed, minimum entry criteria may be enhanced and date of application may be considered.

Applications received after 30th June 2015 will only be considered if there are places left on the course.



ENTRY REQUIREMENTS

Qualification	Grade	Points
GCSE	A*	6
	A	5
	B	4
	C	3
	D	2
BTEC Level 2 Diploma/ First Diploma	Distinction	20
	Merit	16
	Pass	12
Irish Leaving Certificate (Ordinary Level)	A1	6
	A2	5
	B1-B3	4
	C1-C3	3
	D1-D3	2
Essential Skills/ Key Skills	Level 2	3
	Level 1	2

Where an applicant has completed a BTEC Level 2 qualification or equivalent after completing GCSEs, CAFRE will normally base any offers on their GCSE grades or BTEC qualification, whichever attracts the higher points.

Students enrolled on a CAFRE course, who do not have a GCSE in English and Mathematics at Grade C or above, or equivalent, will have to complete Essential Skills qualifications.

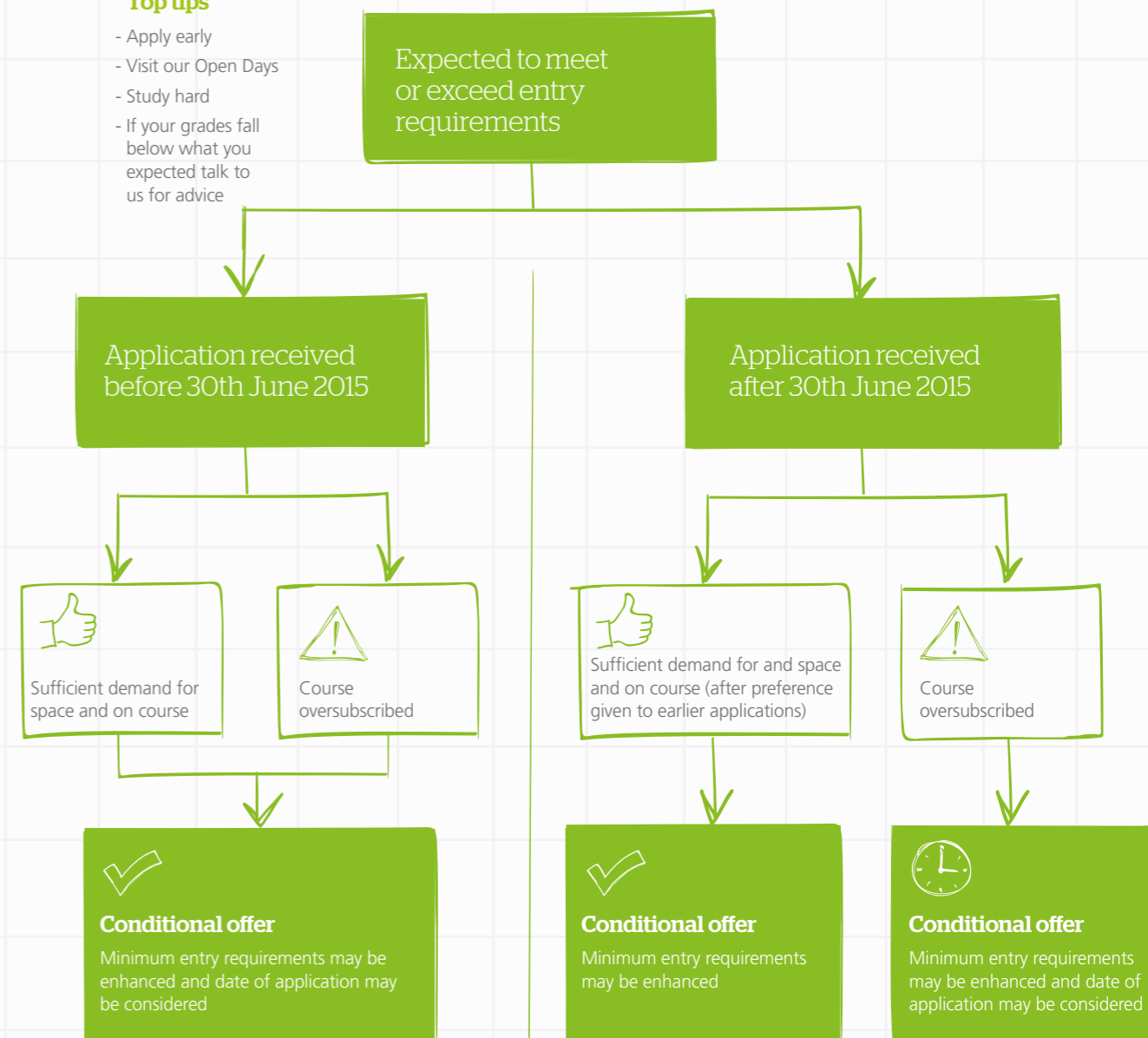
Applicants who have previously completed a qualification will only be offered a place on a programme at the same level after all other applicants have been considered. Further clarification on what constitutes progression is available by emailing: enquiries@cafre.ac.uk

Where a course requires a Science subject as an entry requirement and Single or Double Award Science has not been studied, please email: enquiries@cafre.ac.uk for clarification on other relevant Science subjects.

APPLICATION PROCESS

Top tips

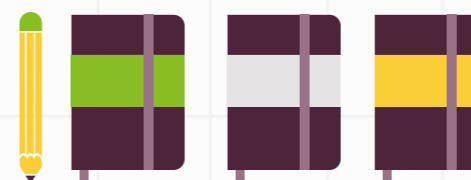
- Apply early
- Visit our Open Days
- Study hard
- If your grades fall below what you expected talk to us for advice



Results

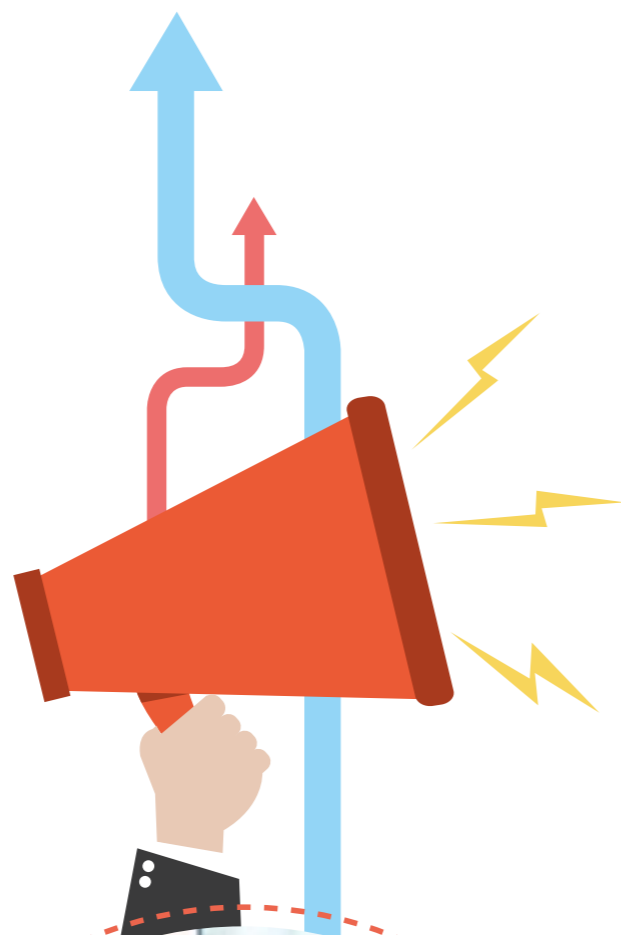
Once you have got your required grades - contact CAFRE to confirm your place.

If your results obtained in August 2015 are below entry requirements, don't panic! Contact CAFRE admissions to discuss your best options on 0800 028 4291





You'll find that starting college, making new friends and studying a subject of your choice is exciting, but it can also be a bit challenging. No one will admit it of course, but the other students on your course will be feeling just as nervous as you. Part of college life is about learning to look after yourself, making decisions and managing your time and money.



Don't worry, there's a range of people at CAFRE to help you any time you need support. Your **Personal Tutor** will be there to advise you on academic issues.

Our **Student Support Officer** offers one-to-one advice and guidance on personal, academic and financial matters and any other concerns you may have. In the first few days of your course you'll take part in an induction programme during which you'll find out about our full range of support services and the people who are there to help you.

Accommodation and wardening team

These staff are available 24 hours a day at each campus to assist students living in accommodation. They can be contacted as follows;

Enniskillen Campus
Tel: 028 6634 4832

Greenmount Campus
Tel: 028 9442 6650

Loughry Campus
Tel: 028 8676 8139

Medical services

Residential students who wish to transfer to a local doctor, or who are living outside the practice area of their family doctor (generally 15km), may register with a local doctor of their choice. If you are unwell, the Accommodation Team will make arrangements for you to attend a doctor, or if necessary, take you to hospital.

Support for students with disabilities

If you have a disability or specific learning difficulty please let us know as early as possible so we can meet your individual requirements and provide timely support. Contact our Student Support Officer for further information.

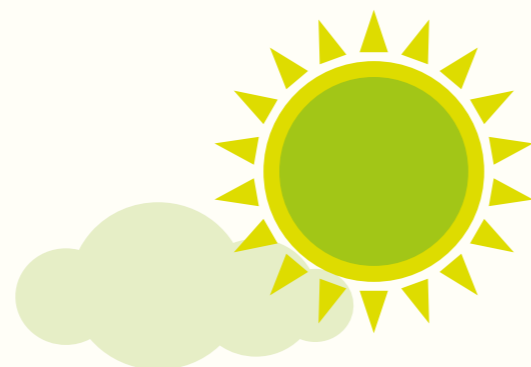
Counselling service

As a CAFRE student you will have access to a free 24/7 independent and confidential service either by telephone or by face-to-face counselling on or off campus. The service is discreet and professional and its staff have wide experience in dealing with all types of problems students may face. We hope you will not need this service but it is reassuring to know that it is there.

CAFRE student support services comply with our policies on; Anti-bullying, Drugs and Alcohol, Pastoral Care, Health Promotion, Equality and Diversity, Sexual Orientation discrimination and Health and Safety. Full details of these policies and our Student Charter are available at www.cafre.ac.uk



AGRICULTURE



COURSES

- BTEC Level 3 Extended Diploma in Agriculture
- City & Guilds Level 2 Diploma in Agriculture
- Level 3 Apprenticeship in Agriculture/City & Guilds Level 3 Diploma in Work-based Agriculture
- Level 2 Apprenticeship in Agriculture/City & Guilds Level 2 Diploma in Work-based Agriculture
- Multi-Skilling Programme



Industry insights

The agriculture sector is one of the largest employers in Northern Ireland and produces a gross output of just under £1.5 billion each year.

With the current challenges and opportunities facing the agricultural industry it is essential that those considering a career in this sector are capable of adapting to change and availing of market opportunities. Agriculture

courses at Greenmount Campus are highly practical and business focused and aim to develop students' skills to enable them to work either on the home farm or to pursue a career in the agriculture sector.



Pauric McHugh

"I started out on the Level 2 Diploma in Agriculture course and when I finished it I was pleased that my results enabled me to progress onto the Level 3 Extended Diploma. I particularly enjoyed the combination of hands on practical livestock work combined with lectures in the first year of the Level 3 course and I was delighted to receive the Young Farmers' Prize for Progress.

I then went to Staffordshire and spent my work placement year on Mark Holt's dairy and arable farm. Since graduating in June 2014 I have taken up a full-time position on Mark Holt's farm and am looking forward to the next step in my career in agriculture."



Agriculture career prospects

Students enter the industry at different levels depending on their qualifications and experience. Our graduates now hold many senior positions in the agricultural and land-based industries.

For more information on career choices visit www.lantra.co.uk or www.environmentjob.co.uk or our website www.cafre.ac.uk

Farmers/Practical agriculture

Some graduates return to farming either as farmers or assistants on large farms. Successful farmers need to be technically and practically competent and be able to make good business decisions in a changing environment.

Unit manager - pigs, dairy, beef or sheep

Unit managers will focus on one livestock enterprise within a farm business, managing the daily running of that unit. Work will vary depending on the livestock involved but will generally involve breeding, feeding and animal health. Unit managers may need to work closely with other section heads.

Agriculture machinery operator

There is a wide variety of work involving machinery operations, including cultivation and planting, spraying, sowing, fertilising, harvesting crops and silage, digger work and spreading slurry. Basic maintenance of machinery will also be expected.

Assistant farm manager

Carry out the day-to-day running of a farm working closely with the farm manager. May involve grassland management, crop and livestock husbandry depending on the farm.

Livestock technician

There are many variations of a livestock technician, but most offer specialist services to dairy, beef and sheep farms including cattle foot trimming, artificial insemination of cows and ewes, and pregnancy diagnosis through scanning.

Hatchery supervisor (poultry)

Assist with the day-to-day running of the hatchery, with responsibilities for ensuring equipment is set up correctly, operated safely and cleaned to a high standard after use. A hatchery manager also co-ordinates the transfer of eggs on-site and chick grading and transportation.

Broiler House supervisor (poultry)

Assist in the day-to-day running of the broiler unit with responsibilities for ensuring welfare of birds, ventilation management, feed management, vaccinations, production performance and record keeping.



Our agriculture facilities

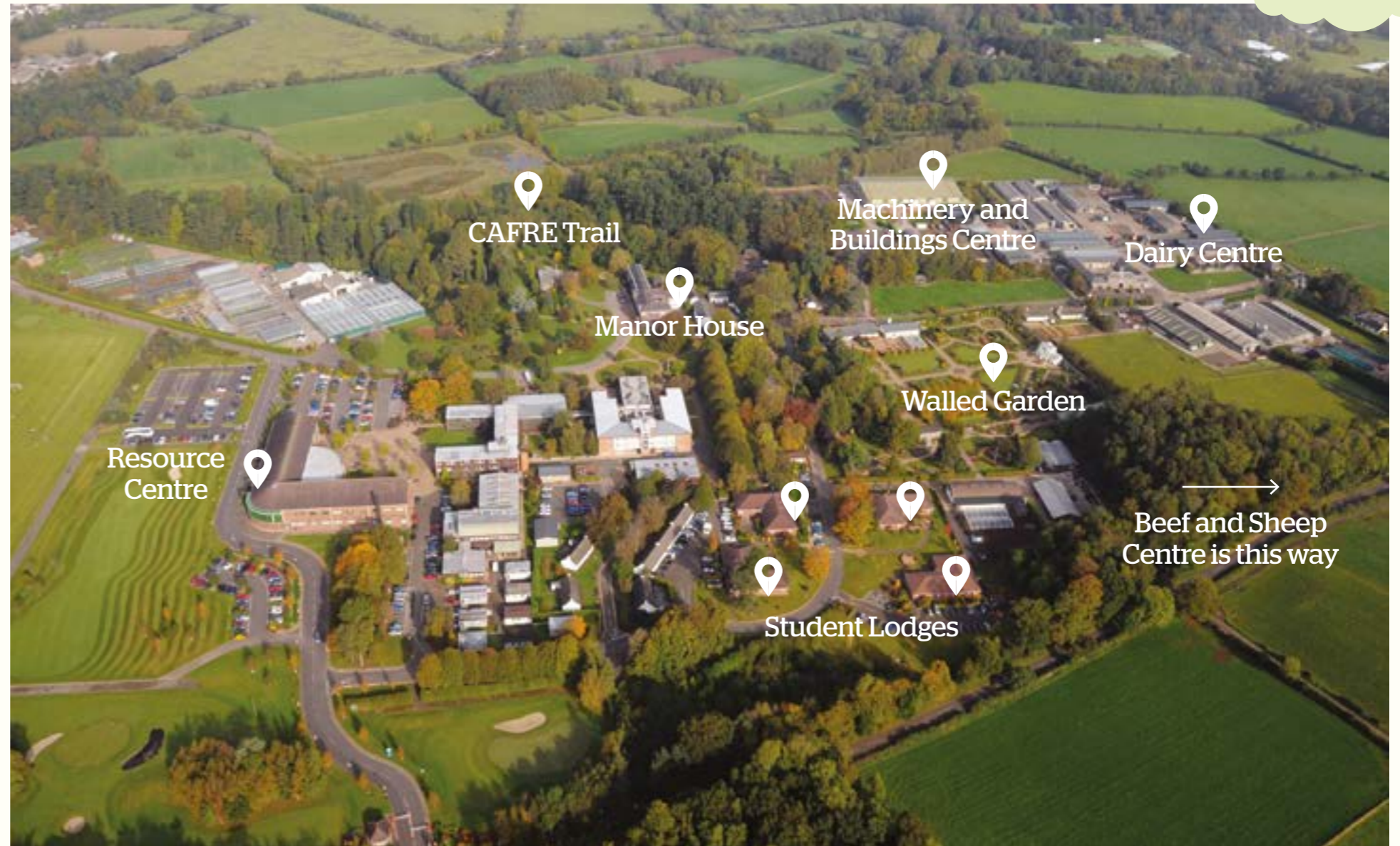
Greenmount Estate Farms

The globally recognised LEAF Marque (Linking Environment And Farming) assurance standard promotes sustainable and profitable production from environmentally responsible and sustainable farm businesses.

CAFRE is a LEAF Marque endorsed farm with three farm centres where integrated decision making and high environmental standards are used to produce premium quality food.

The three farm centres, known as the Hill Farm Centre (890 hectares), the Dairy Centre (169 hectares) and the Beef and Sheep Centre (127 hectares), provide excellent practical learning resources for

students. The lowland Beef and Sheep Centre also provides areas for producing LEAF certified cereal, potato and renewable energy crops.



BTEC Level 3 Extended Diploma in Agriculture

The Extended Diploma is a three-year sandwich course, equivalent to three A-Levels, designed to provide the knowledge and skills essential for a career in the land-based sector. The course combines practical skills on the college farms, classroom theory and one year of industry work experience.

FACT FILE

Course duration:

Three years full-time including one year work placement in Year 2

Course location:

Greenmount Campus

Course Manager:

Kate Semple

Telephone:

028 9442 6700

Email:

kate.semple@dardni.gov.uk

Course content

The main areas of study are:

- Agricultural environments
- Animal health
- Beef, sheep and dairy production
- Business management
- Estate skills
- Grassland management
- Investigative project
- Land-based machinery operations
- Land-based workshop practice
- Livestock husbandry
- Principles of plant and soil science
- Work-related experience in the land-based industries

Plus four of the following optional units:

- Business planning
- Crop production
- Livestock breeding and nutrition
- Organic production
- Pollution control

During Year 2, students undertake a 52 week work placement and develop skills in commercial decision making, enterprise management and problem solving.

Entry requirements

Normally four GCSE subjects at Grade C or above, including Mathematics, English and a Science subject or equivalent qualifications are required. Entry requirements will be enhanced if the course is oversubscribed. Applicants must also demonstrate that they have the equivalent of one year's relevant industry experience, which can be acquired prior to leaving school. or Level 2 Diploma in Agriculture normally at Merit level or above, or an equivalent qualification and normally Grade C in English and Mathematics or equivalent. or Applicants who can demonstrate significant relevant industry experience will also be considered. These applicants may be required to submit work-based evidence and undertake written assessments and/or practical competence tests as part of the assessment.

Progression opportunities and career destinations

This course may provide students with an opportunity to progress onto the Foundation Degree in Agriculture and Rural Studies or the Honours Degree in Agricultural Technology. There is a wide range of employment opportunities including supervisory posts in the feed, agrochemical and fertiliser sectors as well as herd and farm management roles.



Joshua Ivory-Mulligan

“

I have always spent as much time as possible working on my family's farm and I came to Greenmount to learn new things and pick up information that I could use at home or if I wanted to go further afield. I was particularly interested in this course because of the year long work placement which takes place in the middle year.

When we were applying to work at placement farms I found out that a farmer from Co. Armagh had moved to Wisconsin and set up a large dairy unit and was looking for a student. I was delighted when I was offered a place on the farm and am very much looking forward to finding out about large scale dairying on the other side of the Atlantic!”

City & Guilds Level 2 Diploma in Agriculture

This is a one year full-time course that covers a wide range of farm enterprises. It is ideal for those who want to work on a farm. Students will learn practical crop and livestock skills both on the college farms and in the classroom and also have the opportunity to undertake work experience one day per week.

FACT FILE

Course duration:

One year full-time

Course location:

Greenmount Campus

Course Manager:

Kate Semple

Telephone:

028 9442 6700

Email:

kate.semple@dardni.gov.uk

Course content

The emphasis is on the application of skills and knowledge and over half of the course is practical. Students complete work experience one day per week for the duration of the course.

The main areas of study are:

- Environmental and land-based business
- Introduction to animal and plant husbandry
- Introduction to farm animal production
- Introduction to grass and forage crop production
- Introduction to the principles of land-based machinery
- Livestock skills
- Tractor driving
- Undertake work related experience in the land-based industries

Students who have not attained a Grade C or above in English and Mathematics at GCSE or equivalent qualifications, have to complete Essential Skills in Numeracy and Literacy.

Entry requirements

Normally two Grade Cs or three Grade Ds at GCSE or equivalent. Entry requirements will be enhanced if the course is oversubscribed.

Progression opportunities and career destinations

This course may provide students with an opportunity to progress onto the Level 3 Apprenticeship or the BTEC Level 3 Extended Diploma in Agriculture course. After completing this course the majority of students are normally employed in the day-to-day operations on the farm.



Jack Smyth

“

I come from a mainly beef farm near Newtownstewart. We have pedigree herds of Angus and Charolais cattle. I am involved in every stage of showing the cattle and have been since I was old enough to help out. The highest point so far in my show career was winning both last year's Supreme Champion and Reserve Champion at Allams Christmas Fatstock Show and Sale. Showing cattle runs in my family through my grandfather and my father.

I applied to the course to learn about other aspects of agriculture including dairying and grassland management. I have enjoyed going on visits to dairy, pig and poultry farms as you always see something new.”

Level 3 Apprenticeship in Agriculture/ City & Guilds Level 3 Diploma in Work-based Agriculture

This course provides education and training to Level 3 and gives applicants the flexibility to combine work and education. The course reinforces production and management skills in a chosen livestock enterprise.

FACT FILE

Course duration:

78 weeks day-release, including work experience

Course location:

Greenmount Campus and Enniskillen Campus

Course Manager:

Lorna Christie

Telephone:

028 9442 6700

Email:

lorna.christie@dardni.gov.uk

Course content

Students study one of the following livestock enterprises:
- Beef and sheep production
- Milk production
and cover nutrition, grassland management, housing, records, animal health, selecting stock and, if applicable, milking. There is also the opportunity to achieve additional awards.

Students who have not attained a Grade C or above in ICT at GCSE or an equivalent qualification, have to complete Essential Skills in Information and Communication Technology.

Entry requirements

Level 2 Diploma in Work-based Agriculture and normally a Grade C in English and Mathematics or equivalent.
or
Level 2 Diploma in Agriculture or equivalent qualification and normally a Grade C in English and Mathematics or equivalent.

Applicants who can demonstrate significant relevant industry experience will also be considered. These applicants may be required to submit work-based evidence and undertake written assessments and/or practical competence tests as part of the assessment.

Progression opportunities and career destinations

This course may provide students with an opportunity to progress onto the Foundation Degree in Agriculture and Rural Studies. On completion of the course, students will have the necessary skills to work in a variety of businesses connected with farming and practical agriculture jobs.



Matthew Gault

“

I was attracted to the courses at Greenmount as you can progress onto higher level programmes. I completed the Level 2 Apprenticeship course as soon as I left school and then progressed onto the Level 3 programme. If all goes well I think I would like to do the Foundation Degree in Agriculture on a part-time basis. I come from a dairy farm near Limavady and wanted a qualification that would benefit me in terms of improving my own farm and in possibly getting a job. This has worked out really well as I have just got a part-time job as a milk recorder. The course has helped me learn about new techniques in farming and I have now got a better overview of how I want to develop our own farm. I was particularly interested in the cow nutrition part of the course and I have been able to use this information to make significant changes in how we feed our own herd. Greenmount is a very friendly place and have enjoyed every minute of my time here.”



Level 2 Apprenticeship in Agriculture/ City & Guilds Level 2 Diploma in Work-based Agriculture

This course places an emphasis on practical skills development. Students attend class one day per week with the other four days being spent on the work experience provider's farm.

FACT FILE

Course duration:
78 weeks day-release,
including work experience

Course location:
Greenmount Campus
and outcentres

Course Manager:
Lorna Christie

Telephone:
028 9442 6700

Email:
lorna.christie@dardni.gov.uk

Students may also be required to attend block release classes at Greenmount Campus in the first year to complete additional training

Course content

Basic skills include:

- Animal health and welfare
- Animal selection and breeding
- Feeding livestock
- Keeping farm records
- Milking (optional)
- Routine treatments, for example, dosing, injecting
- Tractor operation and two subsidiary subjects from:
 - Emergency first aid
 - Foundation module of pesticide application
 - Manual handling
 - Sheep shearing

Students who have not attained a Grade C or above in English and Mathematics at GCSE or equivalent qualifications, have to complete Essential Skills in Numeracy and Literacy.

Entry requirements

Normally two Grade Cs or three Grade Ds at GCSE or equivalent. Preference will be given to applicants with English or Mathematics at Grade C or above plus relevant knowledge of the industry and basic livestock skills, which can be acquired prior to leaving school.

Progression opportunities and career destinations

This course provides students with an opportunity to progress onto the Level 3 Apprenticeship in the enterprise of their choice or onto the BTEC Level 3 Extended Diploma in Agriculture to gain additional supervisory skills.





Joel McElroy

“
All I ever wanted to do as soon as I was able to leave school was to work on a farm and get a good qualification in agriculture. I applied for a place on the Level 2 Apprenticeship in Agriculture course and got accepted. This course allows me to complete a Work-Based Diploma in Agriculture at an out-centre, close to home, while at the same time being employed on a local dairy farm which I love. I also am completing Essential Skills in Maths and English as part of the programme. I am learning lots of ‘everyday skills’ such as dehorning, injecting and calving, along with information on feeding and nutrition which I find really interesting. As the course is an Apprenticeship, I will also be able to complete additional qualifications such as the PA1 Foundation module in Pesticide Application and a Lantra tractor driving course. I am enjoying every minute of my time on the course.”

Multi-Skilling Programme

This programme aims to provide young people with the opportunity not only to gain a trade but also to train in agriculture. This means that they will have the necessary skills and knowledge to secure employment off the farm and to farm on a part-time basis.

FACT FILE

Course duration:
59-78 weeks (depending on the main programme category)

Course location:
Greenmount Campus

Course Manager:
Lorna Christie

Telephone:
028 9442 6700

Email:
lorna.christie@dardni.gov.uk

Course content

Students undertake two Level 2 courses, one in Livestock Production called a City & Guilds Diploma in Work-based Agriculture, and the other in their chosen trade area, for example: joinery, plumbing, plastering, bricklaying or motor mechanics. Training in the trade area will normally be delivered through day-release and work experience, organised by another training organisation.

Agriculture course delivery

Students attend Greenmount Campus for six one-week blocks.

Skills undertaken include:

- Grassland management
- Health and safety
- Livestock husbandry and nutrition
- Machinery skills and maintenance
- Record keeping

Entry requirements

Normally two Grade Cs or three Grade Ds at GCSE or equivalent. Preference will be given to applicants with English or Mathematics at Grade C or above plus the equivalent of one year's relevant industry experience, which can be acquired prior to leaving school. In addition applicants may be required to complete an agricultural knowledge assessment.

Applicants must meet the entry requirements for 'ApprenticeshipNI' or 'Training for Success' set by the Training Organisation providing the Work-based Diploma in their trade area.

Progression opportunities and career destinations

This course may provide students with an opportunity to progress onto a Level 3 Apprenticeship in their trade area or a Level 3 programme in Agriculture. Most trainees will be in work or will gain full-time employment in their chosen trade area and farm part-time.



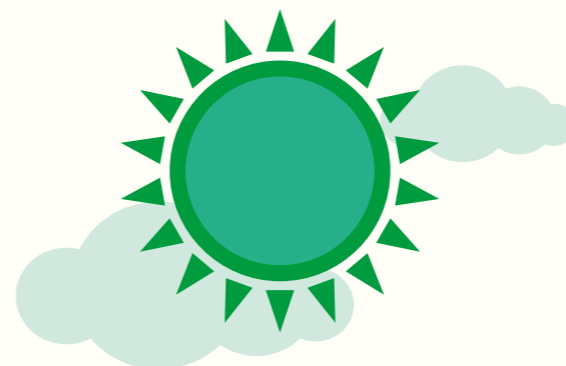
Andrew Hutchinson

“

I grew up on a mixed beef and sheep farm in Newtownbutler and have always enjoyed farming. Through the Multi-skilling programme I can complete a qualification in agriculture while at the same time train to learn an engineering trade at South West College. I attend Greenmount Campus for a series of intensive weeks training in agriculture to complete a Work-based Diploma. I can combine my agriculture and engineering skills, which is very useful on the farm. I can do my own welding and machine maintenance which saves on repair bills and time. I am also continually learning and picking up lots of new ideas from the courses. I've learnt about grassland management, dehorning, injecting and about feeding stock. I would recommend this course to anyone as it's a great way to learn and work at the same time.”



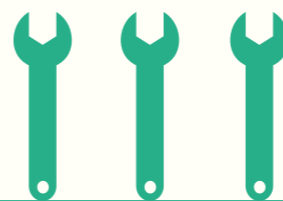
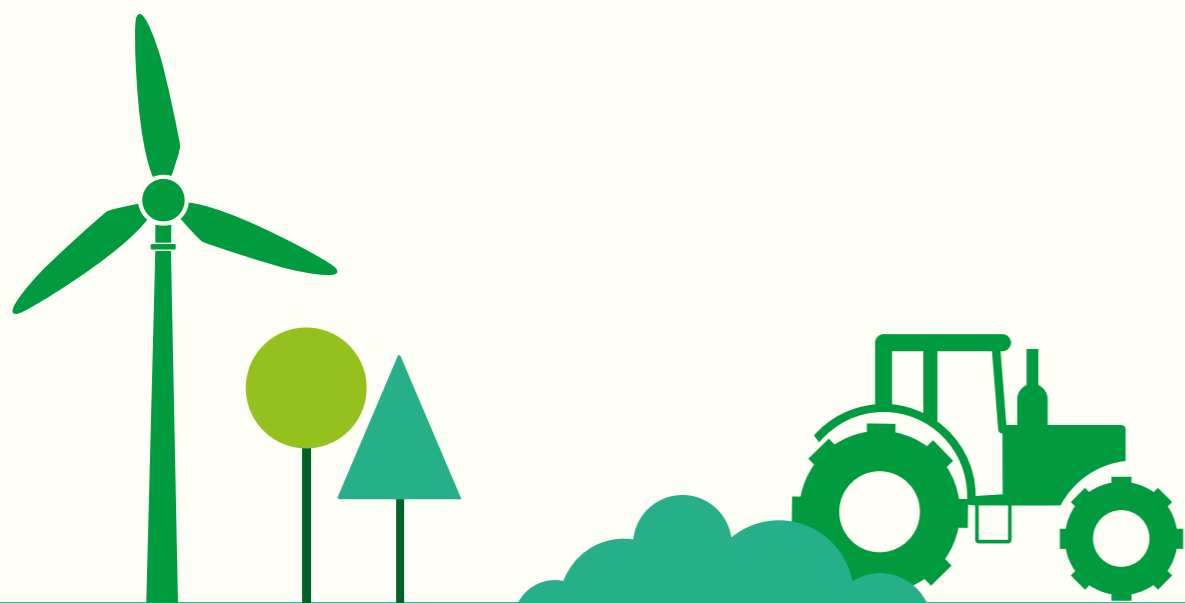
LAND-BASED TECHNOLOGY



COURSES

- Level 3 Extended Diploma
in Land-based Technology

Contents



Industry insights

All those familiar with modern agriculture will appreciate the crucial role that machinery plays in this industry.

As machinery becomes more complex, more and more people with specialist technical training will be needed to service, maintain, operate and support it.

Given the complexity and high value of machinery, good career opportunities exist in this sector. There are also excellent progression opportunities for those wishing to further their studies.



Ryan McGoldrick

"I completed the Level 3 Extended Diploma in Land-based Technology at CAFRE in June 2014. After completing first year, I spent my work placement at Burden Brothers in Kent, England – a big business which runs a contracting operation and several John Deere dealerships that sell and service a lot of tractors and equipment. I enjoyed my time there and had the opportunity to learn more about large, modern equipment.

When I completed the course at CAFRE, I started my current job with Claas and Erwin Agri-Care. I am now continuing my training as a Claas Service Technician.

The course at CAFRE was very good preparation for my current position. I am now able to put into practice the things I learned when I was at college. We covered the theory and skills that I needed to know before I started my job in the farm machinery industry."



Land-based Technology careers

Working in this sector is not always easy; hours can be long and sometimes work needs to be done outdoors in difficult conditions. However, demand is steady for well-qualified technicians across the UK and the island of Ireland. Work is challenging and varied and most of those in the industry derive a high level of satisfaction from their work.

Service technician or engineer

A fully qualified service technician or engineer will normally have achieved a Level 3 Diploma in Land-based Engineering Operations. The work involves the service and repair of agricultural machinery, both in the workshop and in the field. More often than not, diagnosis of faults on modern equipment involves the use of complex diagnostic tools and IT equipment. There is strong demand for technicians with advanced skills in this area. There is a specific pathway within the Land-based Technology qualification (incorporating a Level 3 Diploma in Land-based Engineering Operations) for those wanting to train as service technicians or engineers, with a greater emphasis on work-based learning.

Demonstrator/Sales personnel

Many students completing the Level 3 Extended Diploma course have an interest in tractor and machinery marketing and sales. A number of past students are currently employed in these roles. Similarly, there are openings for those who wish to work in product support and related technical roles. The Extended Diploma course provides a useful foundation for someone embarking on a machinery sales, demonstration or product support role.

Design and fabrication engineers

A career in the design and manufacture of machinery usually requires someone with a relevant degree. The technology used in modern agricultural and horticultural machinery is at the highest level of sophistication, often beyond that in cars or trucks.

After appropriate training, design engineers will normally specialise in a given area such as engines, transmissions, hydraulics or electronics.



Our Land-based Technology facilities

The Machinery and Buildings Centre (MBC) was specifically designed to accommodate all of the engineering, mechanisation training at Greenmount Campus. A range of workshops facilitates training in service engineering, tractor testing, precision engineering, welding and fabrication.

Equipment

Greenmount Campus is well equipped in terms of hand tools, power tools and other specialist equipment. In addition, models, display rigs and testing equipment are available to demonstrate key operating principles of modern farm machinery.

The campus maintains a fleet of modern tractors of varying makes ranging in power from 20hp (15kW) to 155hp (116kW). Some are used on the farms and the estate while others are for student training.

The College enjoys excellent relationships with tractor and machinery manufacturers and suppliers.



Level 3 Extended Diploma in Land-based Technology

This course is aimed at those who wish to follow careers in the wider land-based engineering sector. Students follow a common curriculum in first year and then select a pathway to study in subsequent years.

FACT FILE

Course duration:

Two or three years depending on the pathway chosen, including work experience.

Course location:

Greenmount Campus

Course Manager:

Jim Breen

Telephone:

028 9442 6831

Email:

jimjoseph.breen@dardni.gov.uk

The college-based pathway is for students wishing to pursue careers in machinery design, fabrication, demonstration or sales (or wishing to progress to higher education). It takes one further year of study (two years in total).

The work-based pathway (incorporating the Level 3 Diploma in Land-based Engineering Operations) is specifically for students who wish to follow careers as service technicians or service engineers. It typically takes two further years of study, spending up to four days a week in the workplace, (three years in total).

Please note that the curriculum and content of each course pathway differs substantially.

Course content

The main areas of study include:

- Inspect and test land-based machinery and equipment
- Perform thermal joining and cutting processes
- Service and repair engines and components
- Service and repair hydraulic systems and components on land-based equipment
- Understand and service land-based harvesting machinery (cutting and lifting)
- Understand and service land-based harvesting machinery (processing)
- Understand and work with land-based vehicle engine technology
- Understand health, safety and welfare in the land-based engineering workplace
- Understand land-based vehicle chassis systems
- Undertake land-based workshop practice.

Areas of study in subsequent years depend on the pathway selected. See our website for more information www.cafre.ac.uk

The Level 3 Extended Diploma is typically awarded on the completion of 180 credits (18 or more units).

Entry requirements

Normally four Grade Cs at GCSE (or above) including Mathematics and English (or equivalent qualifications).

or Applicants who have completed a Level 2 Diploma in a relevant course achieved with Merit plus Grade Cs at GCSE (or above) in Mathematics and English (or equivalent qualifications).

or Applicants who can demonstrate significant relevant industry experience. These applicants may be required to submit work-based evidence and undertake further assessments.

Entry requirements will be enhanced if the course is oversubscribed.

Progression opportunities and career destinations

This course may provide students with the opportunity to progress onto appropriate Foundation and Honours Degree courses. There is a range of employment opportunities for graduates in the land-based technology sector.



Kenneth Nelson

“

I am enrolled on the second year of the Level 3 Extended Diploma in Land-based Technology. The course has given me the chance to learn about a much wider range of tractors and machinery. In particular, I've learned how to repair and fix equipment and have really enjoyed the task where I had to rebuild a diesel engine from the ground up. When I complete the course, I am hoping to travel abroad and am considering going to New Zealand where I can put my qualification in Land-based Technology and the knowledge and skills I have gained to good use. CAFRE has also given me the chance to meet a lot of new friends and all with a similar interest in machinery.”



EQUINE



COURSES

- BTEC Level 3 Extended Diploma in Horse Management
- BTEC Level 2 Diploma in Horse Care
- Level 2 Apprenticeship in the Equine Industry/Level 2 Diploma in Work-based Horse Care/ Racehorse Care
- Farrier Upskilling Programme
- Pre-Farriery Programme



Industry insights

The equine industry is an international business with many job opportunities, enabling students to experience life and work around the world.

Enniskillen Campus currently provides the widest range of equine programmes in Ireland. Courses have been developed which meet the needs of the industry and students alike, producing graduates with the

capability to succeed in a wide range of careers. Through the courses, the College aims to help develop a competitive equine industry and aspires to give students an insight into many different equine related careers.



Adam Nesbitt

"I always had a passion for horses and I decided to go to Enniskillen Campus after completing my GCSEs to fulfil my dream of a career working in the equine industry.

I commenced the Level 3 Horse Management programme and thoroughly enjoyed my two years on this programme. I acquired a lot of knowledge about the equine industry in addition to learning new practical skills that are a pre-requisite for employment in industry. I spent ten weeks of work placement at Cian O'Connor's showjumping yard. I really enjoyed my placement and it further developed my equine and employability skills.

On completion of the Level 3 programme, I progressed onto the BSc (Hons) in Equine Management programme at Enniskillen Campus. Again this proved to be a very important step in my career development as it helped me develop further competences for the equine industry.

This programme provided an opening for me to secure a one year internship with Coolmore (both in Australia and Ireland) which commenced following my graduation. I am thoroughly enjoying all aspects of my work and have met so many people from across the world.

My time spent at Enniskillen Campus was very enjoyable and I gained so much valuable knowledge and skills. The Level 3 programme and Enniskillen Campus gave me a great foundation to secure my career in the equine industry."



Equine career prospects

Students enter the equine industry at different levels depending on their qualifications and experience. For more information on careers in the equine sector visit: www.lantra.co.uk

Racehorse trainers

The racing industry requires highly skilled people to work as racehorse trainers. Successful racehorse trainers require well developed business management and people skills as well as excellent horsemanship.

Riding instructors

A teaching vocation within the equine industry will offer a challenging career and a high level of job satisfaction. Riding instructors need to be enthusiastic, confident, patient and articulate with a sense of humour and good communication skills.

Competition and stud grooms

Grooms should be in excellent health, physically fit, hard working, skilled and motivated. Some grooms also ride and compete in their chosen industry. Progression to head groom or travelling groom usually comes with experience.

Riders

There are a number of jobs worldwide for lightweight, experienced work riders. Talented, dedicated riders can progress in their area of expertise to become competition riders or jockeys.



Our equine facilities

Equine courses offered at Enniskillen Campus incorporate a strong practical dimension and the philosophy of 'learning by doing' is applied throughout all programmes.



Specialist amenities

The campus was founded in 1967 and has provided over 45 years of high quality education and training with equine courses being offered since the early 1990s. The combination of excellent equestrian, teaching and residential facilities at the campus enables students to develop their practical and academic competencies in a pleasant environment. The students receive excellent support from members of the local equine industry.

The campus has been redeveloped to provide an impressive range of indoor and outdoor facilities. There are stabling facilities for student livery horses, a horse walker, an indoor arena and a number of outdoor arenas.



BTEC Level 3 Extended Diploma in Horse Management

This course provides excellent preparation for those wishing to pursue a career in the equine industry or progress onto higher education. The course is taught using the practical facilities at Enniskillen Campus.

FACT FILE

Course duration:

Two years full-time including a ten-week work placement

Course location:

Enniskillen Campus

Course Manager:

Sharon McLaren

Telephone:

028 6634 4842

Email:

sharon.mclaren@dardni.gov.uk

Course content

The main areas of study are:

- Anatomy and physiology
- Breeding and young horse handling and training
- Business management
- Competition grooming
- Equitation – flat and jumping
- Horse behaviour and welfare
- Horse husbandry, stable and yard management
- Working horses from the ground

Work placement

Students complete ten weeks of approved work placement within the two years of the course. Typically students work in a range of yards depending on their area of interest, for example breeding, racing, eventing, show jumping and dressage.

Entry requirements

Normally four GCSE passes at Grade C or above including English and Mathematics. or
Four C3s at Irish Leaving Certificate Ordinary Level including English and Mathematics.

Competency in horse riding is essential for those wishing to undertake riding options.

Applicants must also demonstrate that they have a minimum of 40 hours of experience in the equine industry, which can be acquired prior to leaving school.

Progression opportunities and career destinations

This course may provide an opportunity for students to progress onto the Equine Foundation Degree or Honours Degree programmes. Students are ideally suited to find employment of a practical nature in a wide range of equine businesses. Examples of careers include: managing own business, breaking and schooling horses and/or livery; work riders in racing yards; stud grooms; competition grooms and sales representatives.



Megan McGrory

“

"I have now completed the first year of the Level 3 programme and enjoyed the wide range of units we studied. I was especially delighted to win the Vaughan Trust Award for the top first year student on the Level 3 programme. During the year, I was one of twelve students who travelled to Holland as part of the EU funded Leonardo programme. During our time there we went on a number of visits and in addition I was able to work at Jan Verellen's stables, a showjumping yard. I really enjoyed the whole experience and learning about the industry and Dutch culture. I completed my work experience at Tattymulmona Sporthorse Stud, another great experience which ended a very successful year for me at Enniskillen Campus."



BTEC Level 2 Diploma in Horse Care

This practical course in horse care offers young people the opportunity to develop a wide range of skills required for jobs within the equine sector. The course is taught using the practical facilities at Enniskillen Campus.

FACT FILE

Course duration:

One year full-time, including a five-week work placement

Course location:

Enniskillen Campus

Course Manager:

Sharon McLaren

Telephone:

028 6634 4842

Email:

sharon.mclaren@dardni.gov.uk

Course content

The main areas of study are:

- Estate maintenance
- Feeding and watering horses
- Horse handling
- Principles of horse biology
- Riding horses
- Work related experience in the horse

Work placement

A minimum of five-weeks approved work placement is an integral part of this course. Students are encouraged to find work in their area of interest such as breeding, racing, competition yards or riding schools.

Entry requirements

Normally two Grade Cs or three Grade Ds at GCSE or equivalent, including English and Mathematics.
or
Two C3s or three D1s at Irish Leaving Certificate Ordinary Level including English and Mathematics.

Basic skills in horse riding are essential for those wishing to undertake the riding module.

Students who have not attained a Grade C in English and Mathematics at GCSE or equivalent have to complete Essential Skills in Literacy and Numeracy.

Applicants must also demonstrate that they have a minimum of 40 hours of experience in the equine industry, which can be acquired prior to leaving school.

Progression opportunities and career destinations

This course may provide an opportunity for students to progress onto the BTEC Level 3 Extended Diploma in Horse Management. Students are well positioned to find employment in a diverse range of sectors within the equine industry including: racing, show jumping, eventing, dressage and showing, riding schools, livery yards and studs.



Carla Cosgrove

“

I really enjoyed the Level 2 Diploma in Horse Care course. I have always liked working with horses and wanted to learn more and this is the reason that I went to Enniskillen Campus. Throughout the year I learnt a lot of new theory and improved my practical skills when working with horses. I even enjoyed the early morning yards!

I chose to complete my work placement at Clem McMahon's showjumping yard, which I really enjoyed, as it gave me lots of experience of the equine industry. I really liked my year at Enniskillen and I have now progressed onto the Level 3 Extended Diploma in Horse Management course.”

Level 2 Apprenticeship in the Equine Industry/Level 2 Diploma in Work-based Horse Care/Racehorse Care

This course is a work-related, competence-based qualification. It reflects the skills and knowledge needed to do a job effectively and shows that a learner is competent in basic horse care work.

FACT FILE

Course duration:
78 weeks, block release and work-based training and assessment

Course location:
Within the workplace and local out centres

Course Manager:
Stephanie Wood

Telephone:
028 9442 6993

Email:
stephanie.wood@dardni.gov.uk

Course content

The main areas of study are:

- Carry out routine care and monitor the health and well-being of horses
- Clean and groom horses
- Clean and maintain stables
- Establish and maintain effective working relationships with others
- Maintain and develop personal performance
- Monitor and maintain health and safety
- Provide feed and water to horses
- Restrain horses using specified methods

Entry requirements

Normally two Grade Cs or three Grade Ds at GCSE or equivalent, including English and Mathematics. Students who have not attained a Grade D or above in English and Mathematics at GCSE or equivalent, must complete Essential Skills in Literacy and Numeracy as part of the course. Basic skills in horse riding are essential for those wishing to undertake the riding module.

Progression opportunities and career destinations

This course may provide an opportunity for students to progress onto a Level 3 qualification or to be employed in a diverse range of roles within the industry including horse grooms, riding centre employees and racing yard grooms and riders.



Keziah Kilpatrick

“
I work in a private schooling yard looking after approximately six horses. I find the Apprenticeship programme very useful, providing me with not only information but also skills to complete my work.
On completion of the course I hope to study on a full-time programme at Enniskillen Campus, to further develop my knowledge, and gain higher qualifications that will help me progress my career to ultimately work with animals in a caring or rehabilitation role.”

Farrier Upskilling Programme

The Farrier Upskilling programme at Enniskillen Campus is designed for those already working in the industry and seeking to achieve the Worshipful Company of Farriers Diploma Award (DipWCF).

FACT FILE

Course duration:
Two days per month for approximately two years

Course location:
Enniskillen Campus

Course Manager:
Catherine Crowley

Telephone:
028 6634 4601

Email:
catherine.crowley@dardni.gov.uk

Course content

The course covers the principles of equine anatomy, physiology, conformation, dynamics and movement, injuries and ailments / diseases affecting the foot and limb and the fundamentals of farriery.

Practical skills include making different types of shoes from steel stock, using coke and gas forges.

As part of the final assessment, students are required to produce a portfolio of handmade horseshoes for the Worshipful Company of Farriers (DipWCF) examination.

Work placement

Suitable for farriers already practicing in the industry, with two years of verifiable experience.

Entry requirements

Applicants must have written confirmation, from at least two independent sources, one of which must be a farrier, confirming that they have been employed regularly and gainfully as a registered or unregistered farrier for a period of at least two years. Further guidance can be obtained from the Course Manager.

Progression opportunities and career destinations

Through the course farriers have the opportunity to gain a recognised qualification and from there they can apply to the Farriers Registration Council to become registered.



“ I decided to apply for the Farriery Upskilling Programme as it is a well recognised course for farriers. It offers me good training in both practical horseshoe making and the theoretical aspects of the anatomy and physiology of the horse's hoof and limbs. I am enjoying all aspects of the course and learning so much and I feel that my practical farriery skills are improving. I have a lot of work ahead of me as I prepare for my examination for the Diploma of the Worshipful Company of Farriers (DipWCF) next year. I feel that this course on completion will help me in the development of my farriery business in the future.”

Pre-Farriery Programme

Farriery is the shoeing of horses and similar animals. A farrier is a skilled craftsman who is able to make shoes for all types of horses' feet according to the needs and welfare of the animal. This course provides the knowledge and skills required to progress to a farriery apprenticeship.

FACT FILE

Course duration:

One year full-time, including a five-week work placement

Course location:

Enniskillen Campus

Course Manager:

Sharon McLaren

Telephone:

028 6634 4842

Email:

sharon.mclaren@dardni.gov.uk

Course content

- BTEC Level 2 Diploma in Horse Care
- City & Guilds Level 2 Certificate in Forgework

Work placement

Students spend five weeks working with an approved farrier or in an approved work experience equine establishment to improve their horse care skills.

Entry requirements

Normally two Grade Cs or three Grade Ds at GCSE or equivalent including English and Mathematics or two C3s or three D1s at Irish Leaving Certificate Ordinary Level including English and Mathematics.

Students who have not attained a Grade C in English and Mathematics at GCSE or equivalent have to complete Essential Skills in Literacy and Numeracy.

Applicants must also demonstrate that they have a minimum of 40 hours of experience in the equine industry, which can be acquired prior to leaving school.

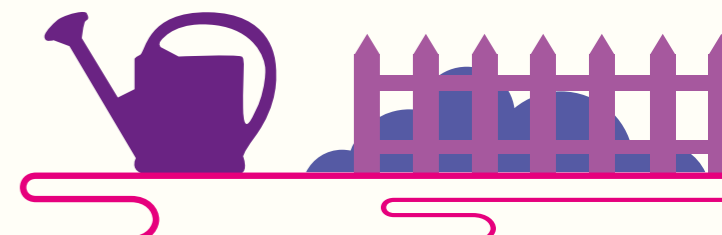
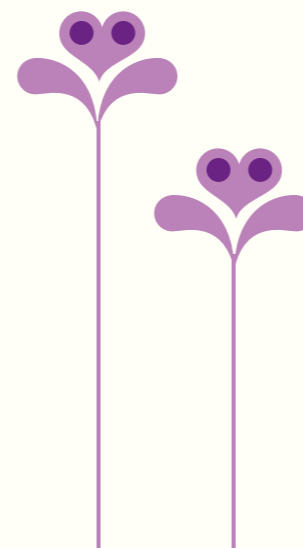
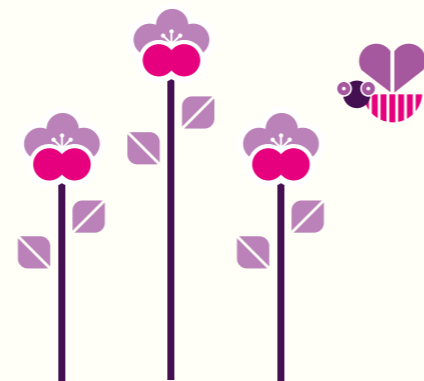
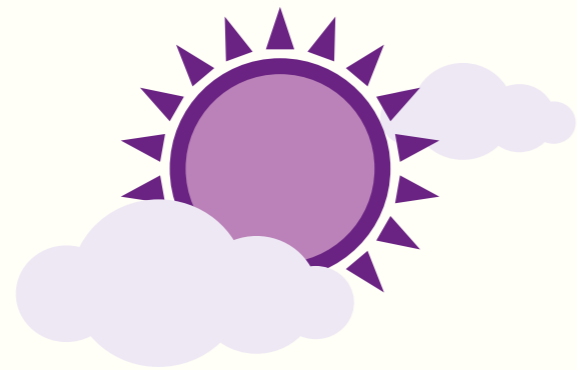
Progression opportunities and career destinations

This course may provide an opportunity for students to progress onto an Apprenticeship in Farriery, ultimately sitting the Diploma of the Worshipful Company of Farriers and becoming a registered member or study for the BTEC Level 3 Extended Diploma in Horse Management.



“I have always worked with horses and have been fascinated by the work of a farrier. For this reason I decided to apply for the Pre-farriery course and was delighted when I secured a place. I have really enjoyed the time spent in the forge and learnt a range of valuable skills such as shaping metals and using forging, cutting and joining techniques. It was hard work but very enjoyable. I also completed the Level 2 Diploma in Horse Care alongside the course which allowed me to develop my equine skills further including care and handling of horses. I hope to secure an apprenticeship with a farrier.”

FLORISTRY



COURSES

- City & Guilds Level 3 Diploma in Floristry
- City & Guilds Level 2 Diploma in Floristry

Industry insights

Floristry is a diverse business sector offering a career in a fascinating and dynamic profession which combines creativity and technical ability with business skills.

CAFRE offers the only nationally recognised full-time floristry course in Northern Ireland and has a well established reputation for training those wishing to enter or who are already employed in the floristry industry.

Greenmount florists have an amazing track record of examination and competition success. Many now manage successful flower shops and several have established new floristry businesses.

Seven Greenmount floristry students have reached the UK finals of the Worldskills Floristry Competitions in recent years, including Intermediate Gold Medallist, Romaine Hodgen and Advanced Gold Medallists, Nigel Close and Heather Hume. Since 2009, five current students or graduates have also reached the finals of the prestigious British Florist Association Young Chelsea Florist of the Year Competition, held each year at RHS Chelsea.



Andrew Smith

"I graduated with a Degree in Design before deciding on a career in floristry. I completed the one year, full-time Level 2 Diploma and went on to study for the Level 3 Diploma in Floristry while working in Floral Art Florists, Drumahoe. Through the course I developed a great range of floristry skills and thoroughly enjoyed design competitions. I was delighted to achieve Distinction grades in all nine units of the Level 3 Diploma and to be awarded the prize for top student in 2014.

Having won the Ireland heat of the UK Skills Floristry design competition at Greenmount, I've been invited to compete in the National Final at The Skills Show in the NEC in Birmingham. Floristry really is a great career for anyone who wants to combine design and business skills especially if, like me, you also enjoy the challenge of providing great customer service."



Floristry career prospects

Junior Florist

As a Junior Florist you will be responsible for conditioning flowers and foliages used in the shop and displaying them for sale. You will also assist in making up designs for a range of customers and occasions, help customers choose suitable designs and gifts, care for plants and help with shop displays and price marking. You will need good people skills and must be able to work as part of a team, especially when the pressure is on at peak sales periods. Creativity and a willingness to learn will help you move up the career ladder to a Florist post.

Florist

As a qualified Florist you will need extensive product knowledge and design skills to create designs suitable for gifts, weddings, corporate events and funerals. Every week you will need to guide customers who are experiencing the highs and lows of life and to do this effectively good communication and customer care skills are essential. With increasing competition from supermarkets, florists need to offer personalised designs at a range of price points and must ensure designs are profitable.

Senior Florist/ Shop Manager

A Senior Florist will have several years' experience of retail floristry and will have built up a high level of design skill. For many Senior Florists the best part of their job is in planning and creating designs for weddings and corporate events. Many people are first attracted to floristry as a career when they have seen the floral displays at a wedding or a stunning bridal bouquet. However, as a Senior Florist, you will probably also be responsible for the day-to-day running of the shop. This will include general administration, ensuring health and safety, contact with suppliers, stock control and ordering, staff training and management and dealing with (hopefully few) complaints.

For many florists the ultimate goal is to establish their own successful business and there are also opportunities as design demonstrators, floristry tutors, sales representatives and floristry judges.



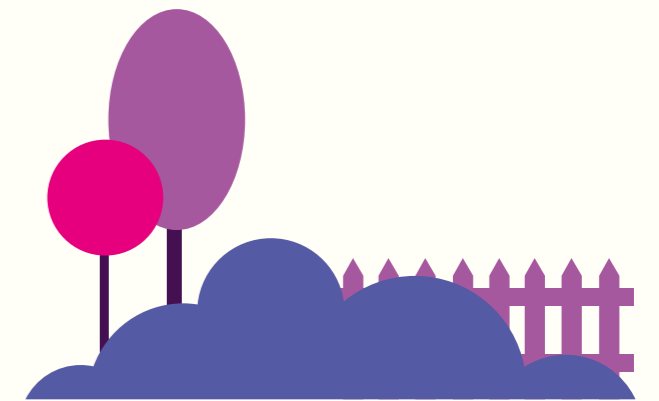
Our floristry facilities

The facilities at Greenmount Campus are unique in Northern Ireland for floristry education and training. The College has excellent purpose built teaching facilities including two floristry studios within the Richardsons Walled Garden.



The studios have dedicated areas for cut flower identification and conditioning, refrigerated display storage, design demonstration and practice, retail display windows and a gift wrapping/ customer service area.

A range of summer cut flower and foliage crops are grown for development and demonstration to growers and florists at the College's Horticulture Development Centre. Floristry students are therefore in the unique position to see at firsthand how cut flower, foliage and pot plant crops are produced using modern production methods. In addition, eighteen hectares of amenity grounds at the College provide excellent opportunities to gain plant knowledge.



City & Guilds Level 3 Diploma in Floristry

This is a practical work-related course designed to develop the skills of those working in the floristry industry, who have achieved a Level 2 Diploma in Floristry or equivalent, or who have extensive industry experience.

FACT FILE

Course duration:

Two years part-time, one day per week

Course location:

Greenmount Campus

Course Manager:

Caroline Mathers

Telephone:

028 9442 6677

Email:

caroline.mathers@dardni.gov.uk

Course content

The main areas of study are:

- Business skills for floristry
- Creative design process for florists
- Design and evaluation: arrangements, tied, sympathy and wedding
- Flower and plant care
- Function and event decoration
- Working in the floristry industry

Entry requirements

Applicants must be currently employed in retail floristry.

Normally four GCSE Grade Cs or above including English and Mathematics with at least one year's full-time employment with a retail florist.
or
Level 2 Diploma in Floristry, at Merit level or above, or an equivalent qualification.

Progression opportunities and career destinations

The course aims to develop the skills of those working in the floristry industry. On completion of the programme students may continue in employment and progress to posts as senior florists, managers or freelance designers. There are excellent career prospects for trained florists both in the UK and abroad.



Emma Sinnamon

“

I graduated with my Level 2 Diploma in 2011 and worked for a year before coming back to Greenmount to study the Level 3 Diploma in Floristry course on a day release basis. My Dad is a professional gardener and I think I was always aware of the satisfaction you could get from working with flowers and plants.

The Level 2 programme allowed me to develop all the basic floristry skills and put them into practice in my work placement and then I was able to incorporate more advanced techniques in design work for the Level 3 Diploma. CAFRE has provided great opportunities for me to get involved with industry and build an impressive CV. The highlight of my career so far was reaching the final of the RHS Young Chelsea Florist of the Year Competition and spending a week with top florists at the famous flower show. I was delighted to be the first current CAFRE student to win a RHS Chelsea Medal!”

City & Guilds Level 2 Diploma in Floristry

This is a practical, work-related course designed to give students a broad understanding and appreciation of the floristry industry. This programme aims to develop and support the floristry industry and is not a leisure course.

FACT FILE

Course duration:

One year full-time or two years part-time

Course location:

Greenmount Campus

Course Manager:

Caroline Mathers

Telephone:

028 9442 6677

Email:

caroline.mathers@dardni.gov.uk

Course content

The main areas of study are:

- Cut flower identification and conditioning
- Design: gift arrangements, sympathy, tied and wedding
- Display of floristry goods
- Interior plant identification and planted design
- Introduction to art and design for florists
- Introduction to function decorating
- Introduction to working in the floristry industry

Entry requirements

Normally two GCSE Grade Cs or three Grade Ds or above including English and Mathematics.

Students who have not attained a Grade C or above in English and Mathematics at GCSE or an equivalent qualification have to complete Essential Skills in Literacy and Numeracy, or

Applicants who can demonstrate significant relevant industry experience will also be considered. These applicants may be required to submit work-based evidence and undertake written assessments and/or practical competence tests as part of the assessment.

Full-time students must also complete a minimum of 40 hours work placement with a retail florist before starting the course and have arranged a work placement for one day per week during term-time.

This course may be studied over two years part-time by those already employed in a florist shop.

Progression opportunities and career destinations

This course may provide students with an opportunity to progress onto the City & Guilds Level 3 Diploma in Floristry on a day-release basis. The course aims to prepare students for employment as skilled florists within the floristry industry. Students may progress to posts as senior florists, managers or freelance designers. There are excellent career prospects for trained florists both in the UK and abroad.



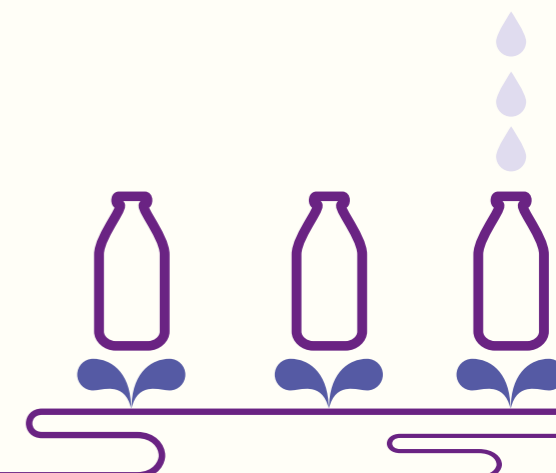
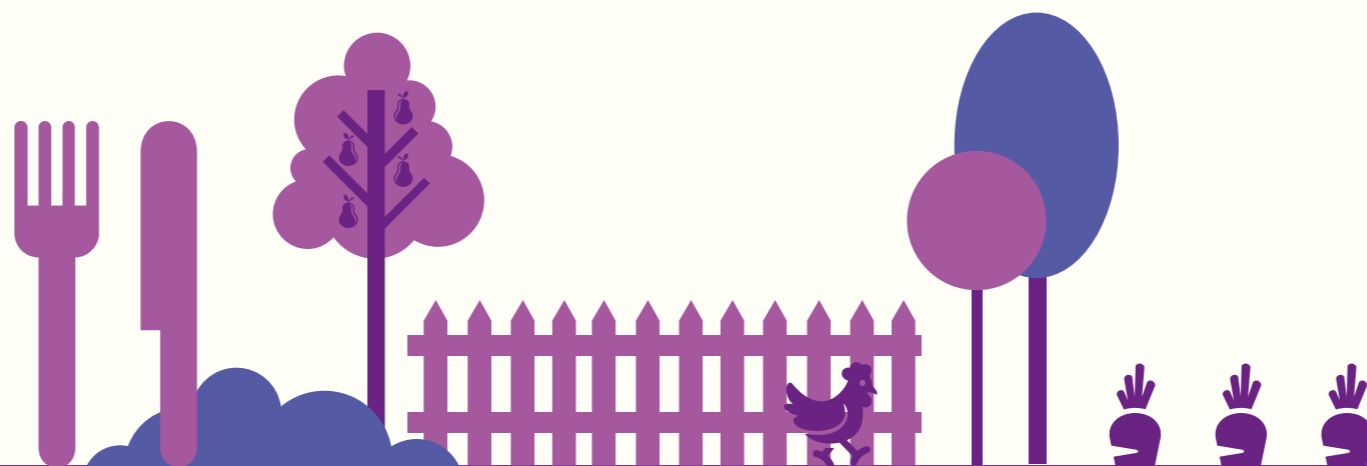
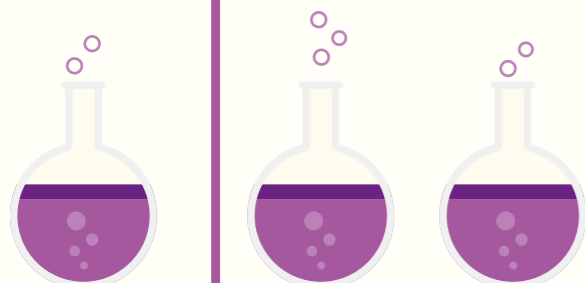
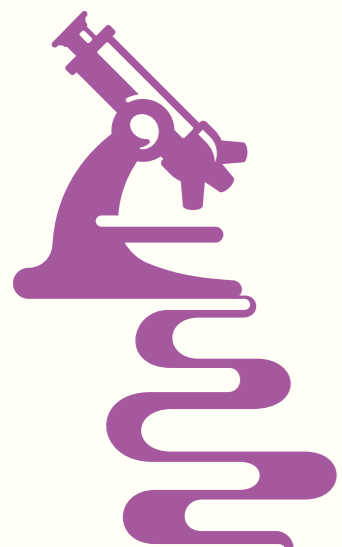
Rebecca Gourley

“

While studying for my GCSEs I was lucky to gain two weeks work experience at Penelope Flowers in Belfast and I really enjoyed it. This, along with working there during the busy Christmas period, gave me a great insight into a career in floristry. With this experience and my interest in Art & Design I applied to study the Level 2 Diploma in Floristry at Greenmount and I continued to work on placement with Penelope Flowers as part of the course.

Being a residential student has given me great opportunities to meet people, making great friends and enjoying the Greenmount social life. After graduating in June 2014 with a Merit overall, I'm working with the same employer and now look forward to studying the Level 3 part-time floristry programme.”

FOOD



COURSES

- National Diploma in Food Technology
- National Diploma in Food, Nutrition and Health
- National Certificate in Food Technology
- National Certificate in Food, Nutrition and Health
- Apprenticeships in Food and Drink

Industry insights

The food and drink industry is one of the largest employers in the UK. It is a buoyant and progressive sector and requires a pool of skilled personnel to ensure a consistent supply of safe, high quality products for discerning quality-conscious consumers.

The food and drink industry is a highly competitive and dynamic sector that is constantly changing to meet consumer demands and adopt new and innovative technologies.

As the world population increases, the industry is being challenged with new ways to produce and package foods. As a result there is a great demand for qualified people to work in a wide range of positions in food businesses.

Anna Hobson

"I left school at the age of 16 and really didn't know what direction my career was going to take. I really enjoyed sciences at school and hearing my brother talk about his course at Loughry got me thinking. I visited the campus on an Open Day and knew from then on – it was the place for me. I studied for a National Diploma to start me on my journey, which led me into work in the food industry for the first time. I completed my work placements with Simply Fruit (Ireland) Ltd and even when I progressed onto the Honours Degree stuck with them – or they stuck with me! My years of study at Loughry have certainly paid off, I'm now in full-time employment with the company as their Technical Manager. I would certainly recommend courses at Loughry and after studying there for five years it certainly has carved a great path for my career to follow!"



Food career prospects

The career opportunities described are designed to give you an overview of some of the key roles within the food and drink industry. Loughry graduates are employed across a wide range of roles and many hold positions of responsibility in food businesses.

The level at which graduates enter the food industry will depend on their qualifications and experience. The skills and knowledge gained through Loughry's courses are also relevant to careers outside the food industry. For more information on food careers visit: www.tastycareers.org.uk

Product development technologists

Product development technologists design and develop new and innovative food and drink products and work to improve and extend existing ranges of food.

Production supervisors

Production supervisors are responsible for the day-to-day activities of manufacturing departments. They lead teams of production staff and schedule manufacturing activities to ensure orders are met at the required time.

Quality assurance technicians

Quality assurance technicians are responsible for ensuring the safety and quality of food by monitoring and controlling the manufacturing process.

Laboratory analysts

Laboratory analysts contribute to the safety and quality assurance of the food leaving the manufacturer by conducting quality tests and checks such as microbiological and chemical analysis.



Our food facilities

Loughry Campus has excellent laboratory and teaching facilities to support its food education programmes. These include chemistry and microbiology teaching laboratories and a specialist food technology centre featuring the latest equipment and materials for producing food to EU standards.



Food Technology Centre

The centre incorporates four mini-food processing areas; meat, bakery, fruit and vegetables and dairy and is designed to demonstrate best practice in food manufacture. This unique facility is equipped with an extensive range of modern pilot and industrial scale food processing and product development facilities to ensure that Loughry students acquire the competencies and skills needed by the food industry. Small-scale processing equipment allows the demonstration of computerised control systems used in food manufacturing.

Science laboratories

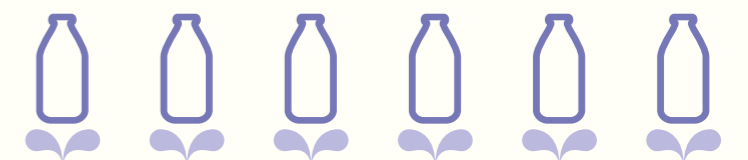
Loughry's laboratories are equipped with advanced scientific equipment which enables students to carry out microbiological, chemical and physical analysis of food ingredients and products. The latest technologies in food analysis are continuously being reviewed, thus enabling students to gain valuable knowledge and experience relevant to careers in the industry.

Food Packaging Centre

The food packaging centre is a unique and well equipped facility used to evaluate packaging materials and complete packs. As food companies strive to meet consumer expectations through innovative packaging, Loughry Campus graduates are in a prime position to make a significant impact on the industry having worked in the centre.

Food Innovation Centre

Plans are well underway to build a Food Innovation Centre at Loughry Campus. This exciting new facility, scheduled to open in 2015, will allow students space to create and develop new food products through enhanced kitchen, sensory and laboratory facilities.



National Diploma in Food Technology

This course has been taught at Loughry for over 30 years and prepares students for employment or progression onto higher-level courses. On completion of the course students receive a BTEC National Diploma in Food Science and Manufacturing Technology.

FACT FILE

Course duration:

Two years full-time including work placement

Course location:

Loughry Campus

Course Manager:

Peter Simpson

Telephone:

028 8676 8130

Email:

peter.simpson@dardni.gov.uk

Course content

Six core units and a further twelve additional units must be completed.

Core units:

- Food and raw materials
- Food safety
- Food technology calculations
- Food workplace practices
- Introduction to food manufacture
- Introductory science for food technicians

Additional units:

- Cereal technology
- Dairy technology – liquid milk processing
- Dairy technology – product manufacture
- Food chemistry
- Food microbiology
- Food process control
- Food product development
- Food science for the technician
- ICT and food management information systems
- Meat technology
- Operational management
- Quality assurance

Work placement

Students will complete a twelve week work placement in a food business between year one and year two of the course.

Entry requirements

Normally four GCSE Grade Cs or above including English, Mathematics and Science.

Progression opportunities and career destinations

This course may provide students with the opportunity to progress onto appropriate Foundation or Honours Degree programmes. It has been designed to meet the growing need of the food industry for qualified people to fill key supervisory roles including production management, quality assurance and product development.



“
Having grown up on a farm I've always had an interest in food. I initially completed my AS levels, but found that the practical subjects that Loughry offered suited me better. The topics are very interesting especially when I get my hands dirty! The work placement I've just completed was very enjoyable, I can now see the wide range of job prospects that are available to me after graduation.”

National Diploma in Food, Nutrition and Health

This course is designed to develop a knowledge and understanding of the links between food, nutrition and health. Students study current issues relating to health, the science of nutrition, the importance of a healthy diet and how to develop innovative, healthy foods which will optimise sports performance.

FACT FILE

Course duration:

Two years full-time including work placement

Course location:

Loughry Campus

Course Manager:

Peter Simpson

Telephone:

028 8676 8130

Email:

peter.simpson@dardni.gov.uk

Course content

Six core units and a further twelve additional units must be completed.

Core units:

- Food microbiology
- Health promotion
- Human nutrition
- Introduction to sports nutrition
- Introductory science for food technicians
- Quality assurance

Additional units

- Consumer behaviour
- Diet and health
- Food and the media
- Food chemistry
- Food in society
- Food product development
- Food safety
- Food science for the technician
- Human anatomy and physiology
- ICT and food management information systems
- Introduction to food manufacture
- Operational management
- Using your senses

Work placement

Students will complete a twelve week work placement in a food business between year one and year two of the course.

Entry requirements

Normally four GCSE Grade Cs or above including English, Mathematics and Science.

Progression opportunities and career destinations

This course may provide students with the opportunity to progress onto appropriate Foundation or Honours Degree programmes. It has been designed to meet the needs of industry and prepare students for careers at supervisory level in the food and nutrition related industries. A range of jobs is available including; quality controllers, laboratory technicians and product development technologists.



“

I have always been interested in how our food fuels our body for exercise. I heard about the National Diploma in Food, Nutrition and Health from the careers teacher at school. After speaking to the college tutors, I decided that this course was the right choice for me. The units are right up my street, leading to very good job prospects whether I decide to continue to study for a Degree or not.”

National Certificate in Food Technology

This course has been designed for those working in the food industry, with no formal qualifications, to develop an understanding of factors involved in food processing, handling and quality. On completion of the course, students receive a BTEC National Certificate in Food Science and Manufacturing Technology.

FACT FILE

Course duration:
Normally three years part-time.

Course location:
Loughry Campus

Course Manager:
Peter Simpson

Telephone:
028 8676 8130

Email:
peter.simpson@dardni.gov.uk

Course content

The course is comprised of six core units and six optional units selected from the additional units list.

Core units

- Food and raw materials
- Food safety
- Food technology calculations
- Food workplace practices
- Introduction to food manufacture
- Introductory science for food technicians

Additional units

- Cereal technology
- Dairy technology – liquid milk processing
- Dairy technology – product manufacture
- Food chemistry
- Food microbiology
- Food process control
- Food product development
- Food science for the technician
- ICT and food management information systems
- Meat technology
- Operational management
- Quality assurance

Entry requirements

Dependent on experience, relevant work within the food industry will be recognised. A basic knowledge of literacy, numeracy and science is essential.

Progression opportunities and career destinations

This course may provide students with the opportunity to progress onto appropriate Foundation or Honours Degree programmes.

It has evolved to meet the needs of the industry allowing students to progress their careers in supervisory or management positions. Examples of roles in food businesses include production supervision, quality control, laboratory or product development.



“ I am currently employed in the meat industry, and whilst I had practical experience, I felt I lacked in some background knowledge. With encouragement from my employers I applied to study part-time. My existing knowledge from work helped me relate to the units I have studied. I have gained invaluable knowledge in food production which has helped build my confidence whilst still being able to work full-time.”

National Certificate in Food, Nutrition and Health

Food, nutrition and health is always in the news. Health promotion is particularly important as we strive to deal with nutritional trends and the challenges they present. This part-time course is designed to develop the knowledge and understanding of the link between food, nutrition and health.

FACT FILE

Course duration:
Normally three years part-time.

Course location:
Loughry Campus

Course Manager:
Peter Simpson

Telephone:
028 8676 8130

Email:
peter.simpson@dardni.gov.uk

Course content

The course is comprised of six core units and six optional units selected from the additional units list.

Core units

- Food microbiology
- Health promotion
- Human nutrition
- Introduction to sports nutrition
- Introductory science for food technicians
- Quality assurance

Additional units

- Consumer behaviour
- Diet and health
- Food and the media
- Food chemistry
- Food in society
- Food product development
- Food safety
- Food science for the technician
- Human anatomy and physiology
- ICT and food management information systems
- Introduction to food manufacture
- Operational management
- Using your senses

Entry requirements

Dependent on experience, relevant work within the food industry will be recognised. A basic knowledge of literacy, numeracy and science is essential.

Progression opportunities and career destinations

This course may provide students with the opportunity to progress onto appropriate Foundation or Honours Degree programmes.

It has been designed to meet the needs of industry and society, preparing students for careers at supervisory level in food and nutrition related industries. A range of jobs is available including quality controllers, laboratory technicians or product development technologists.



“ I work full-time in catering, but have always had an interest in producing more healthy and nutritious meals. After some research, I was attracted to this course. At the beginning I was slightly apprehensive as I have not studied in a long time, but I am currently entering year two and have thoroughly enjoyed all the units studied so far. All my tutors have been very supportive.”

Apprenticeships in Food and Drink

Northern Ireland Apprenticeships are an excellent way to gain a nationally recognised qualification and practical hands-on work experience while in employment. Apprenticeships are offered at Level 2 and Level 3 in a diverse range of work areas within the food and drink sector. The programmes aim to give you the skills that employers want and give you choices in your career.

FACT FILE

Course duration:

Approximately one-two years

Course location:

Apprenticeships are normally delivered in your work place

Course Manager:

Peter Simpson

Telephone:

028 8676 8130

Email:

peter.simpson@dardni.gov.uk

Content

To complete an Apprenticeship you must complete a competence based element as well as completing mandatory Essential Skills in Numeracy and Literacy.

Due to the diverse nature of the industry and depending on the needs of the employer, Apprentices may choose from a number of pathways at both Level 2 and Level 3 for the competence based element of the Apprenticeship. These pathways include:

- Bakery
- Dairy
- Food Manufacturing Excellence
- Fresh Produce
- Meat and Poultry

Eligibility requirements

Apprentices must be about to take up or already be in paid employment in Northern Ireland, having reached the minimum school leaving age. They must be working a minimum of 21 hours a week.

Progression opportunities and career destinations

This programme may provide students with the opportunity to progress within their own organisation and to further their education through progression onto a Level 3 Apprenticeship. Level 3 graduates may have the opportunity to progress onto an appropriate Foundation Degree programme.

It has been designed to meet the growing need of the food industry for qualified people to fill key supervisory roles including production management, quality assurance and product development.

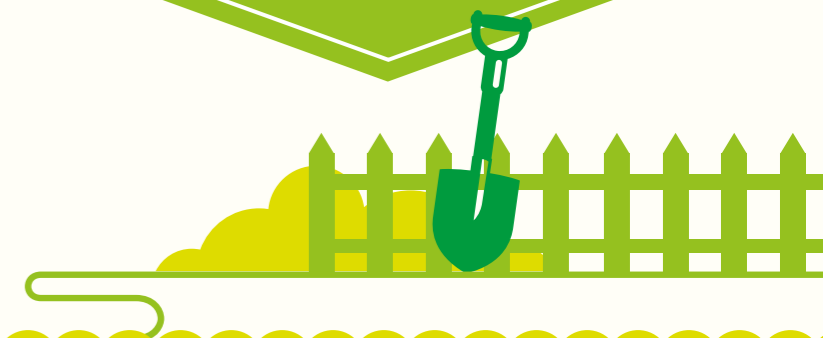
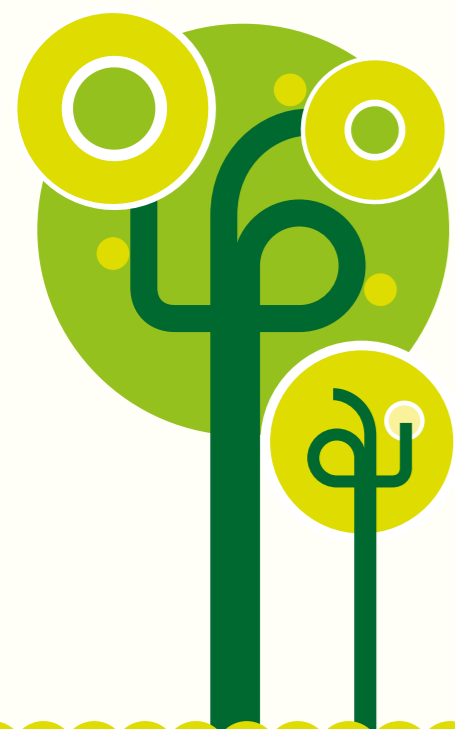


HORTICULTURE



COURSES

- City & Guilds Level 3 Extended Diploma in Horticulture
- City & Guilds Level 3 Subsidiary Diploma in Horticulture (Amenity Horticulture)
- City & Guilds Level 3 Subsidiary Diploma in Horticulture (Landscape Maintenance)
- City & Guilds Level 3 Subsidiary Diploma in Horticulture (Sports Turf Management)
- City & Guilds Level 2 Diploma in Horticulture
- Level 2 Apprenticeship in Amenity Horticulture/City & Guilds Level 2 Diploma in Work-based Horticulture (Parks, Gardens and Green Spaces)
- Level 2 Apprenticeship in Amenity Horticulture/City & Guilds Level 2 Diploma in Work-based Horticulture (Sports Turf-Greenkeeper) including Green-keeping Cadetship

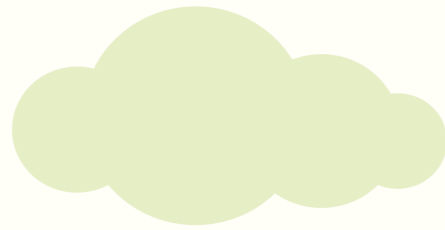


Industry insights

Horticulture impacts on many aspects of our lives and provides fascinating job opportunities in a wide variety of work activities. There is scientific evidence that we work and feel better in pleasant planted surroundings and trees and other plants have a positive effect on health, both indoors and outdoors.

Horticulturalists play a major role in all areas concerned with designing, creating, managing and maintaining our environment.

As designers and managers of urban and rural landscapes, horticulturalists are at the forefront of the world in which we live, work and play.



Matthew Bradley

"In my second year of the Extended Diploma in Horticulture I had the opportunity to take part in trials for the UK Skills Landscape Gardening Squad. I was pleased to be selected along with two of my classmates for the six strong squad and be given a year of intensive training, sponsored by the Worldskills organisation. I was eventually one of two students to be selected for the UK Landscape Gardening Team and represented the UK in Leipzig, Germany, in the World Final in 2013.

I've worked in my family's hard landscaping business during school and college holidays and developed my garden design skills when studying for my Extended Diploma. I won the coveted Ronnie Cameron Perpetual Award for design project work and this has given me the confidence to develop the design and soft landscaping side of the family business."



Horticulture career prospects

Many of our Level 2 Diploma students go straight into employment after one year's training in horticulture, while some progress to study for the Level 3 Extended Diploma. Many Level 3 Extended Diploma students have come to Greenmount after completing their GCSEs while others have higher qualifications or employment experience. All our Level 2 and 3 courses include a period of work placement in a sector of your choice so you get a great opportunity to see if it's right for you. After completing your qualification you may develop your career in horticulture in some of the following ways.

Horticultural worker/ Gardener/Garden Supervisor

This type of work involves preparing and maintaining areas of planting, mowing and maintaining turf areas, pruning plants and trimming hedges. There are opportunities with local authorities, historic public gardens and private properties. Some gardeners specialise in nursery work and may also need to be skilled in estate maintenance. You need to develop a good knowledge of botanical plant names and know what conditions will suit particular plants best. You will also need to enjoy working

outdoors, in all types of weather, and like the challenge of hands on activity. In a more senior post you may also be responsible for conserving valuable plant collections, supervising staff, organising garden events and dealing with the public.

Groundsman/woman, Senior Groundsman/ woman

Groundsmen/women prepare and maintain natural and synthetic sports surfaces. Their work involves all the activities that ensure the best possible playing surfaces, whether this is for football, rugby, gaelic games, tennis, or bowling. As

a groundsman/woman you will use a wide range of machinery and equipment to mark out pitches, apply fertilisers and maintain the condition of playing surfaces. You need to be able to work well on your own and as part of a team to ensure high quality standards and tight deadlines are met. In a more senior post you will be responsible for managing staff, ordering equipment and planning future developments on your sites.



Garden Centre Assistant/ Supervisor/Manager

If you have a good plant and product knowledge and enjoy working with the public this could be the career for you. As a garden centre assistant you will be responsible for the care and presentation of a wide range of plants and garden sundries. You will need to be able to provide good advice to customers and develop your sales technique. More senior posts will also involve ordering and stock control, planning promotions, recruiting and managing staff and possibly organising catering facilities.

Greenkeeper/Head Greenkeeper

Northern Ireland is internationally recognised as a premier location for golf courses, and CAFRE has supported this achievement over the years by helping to train the people responsible for looking after these golf courses.

CAFRE Level 2 greenkeepers and groundsmen and women are trained to safely operate the range of machinery in common use on golf courses and sports grounds throughout Northern Ireland. As a CAFRE trained greenkeeper, you will be able to care for, and present turf surfaces for golf, ranging from tees and greens, to fairways and roughs. This involves managing the feeding and irrigation as well as pest and disease control, alongside the maintenance of the playing surface itself so that the sport can be played at the highest competitive level. CAFRE Level 3 sports turf students have taken this training one step further and are able to supervise the maintenance of sports turf,

including making decisions on treatment regimes, machinery management and construction for example.

Landscape worker/ contractor

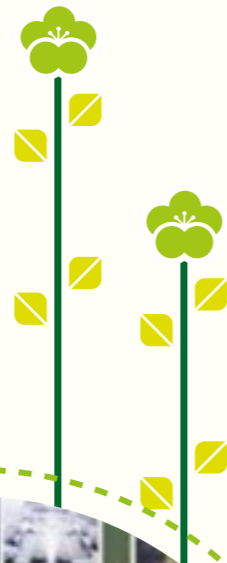
CAFRE trained landscapers and contractors are trained at Level 2 to safely use a range of machinery for the landscape sector. Skilled people working in these areas are able to read from landscape plans and set out and construct gardens and landscaped areas, as well as looking after the plants, shrubs and trees in the gardens afterwards.

At Level 3, CAFRE-trained landscapers are able to plan and design gardens, as well as supervising the work of building and maintaining landscaped areas and gardens for customers.



Our Horticulture facilities

Greenmount is a well established centre for horticulture education and has delivered full-time courses in horticulture since 1924.



The Campus is set in 18 hectares of landscaped grounds originally laid out in the 19th century. They are now planted with an extensive range of trees and shrubs with many interesting landscape features. The Richardsons Walled Garden was redeveloped to celebrate the millennium. It is of a formal design and includes a grand conservatory, pleached limes, a maze, water feature, knot gardens and a range of mixed and herbaceous planting.

The Amenity Horticulture Unit also features sports turf areas for student learning, including the Greenkeeping and Golf Academy as well as high specification sports pitches. The Greenkeeping and Golf Academy, supported by the Golfing Union of Ireland (Ulster branch), has three full playing holes, a short game practice area, a putting green and a unique contoured driving range facility. The Machinery and Building Centre offers an area for undertaking skills training in machinery maintenance. There is also an extensive hard landscaping skills area adjacent to the Walled Garden.

Students also use the well resourced Horticulture Development Centre to study an Integrated Crop Management approach to the production of nursery stock and protected ornamental crops.



City & Guilds Level 3 Extended Diploma in Horticulture

This two year full-time course incorporates an industry placement and offers students both the practical experience and the theory required for a wide variety of careers in horticulture.

FACT FILE

Course duration:

Two years

Course location:

Greenmount Campus

Course Manager:

Caroline Mathers

Telephone:

028 9442 6677

Email:

caroline.mathers@dardni.gov.uk

Course content

Students complete units to the value of 180 credits over two years including a work placement in a sector of their choice between the first and second year of the course.

The main areas of study are:

- Business management
- Construction of hard landscape features
- Garden design
- Horticultural machinery operations
- Horticultural science
- Identification of trees and shrubs
- Landscape maintenance
- Ornamental plant production
- Turf management

Learners develop technical and general employment skills when on work placement. Typical placements include; working for council parks departments, golf clubs, nurseries, garden centres, private gardens/estates and landscaping companies. Students are provided with career planning guidance in preparation for their industry experience; however students are responsible for finding their own placement, which must be approved by CAFRE.

Entry requirements

Normally four GCSE passes at Grade C or above including English and Mathematics. or Level 2 Diploma in Horticulture at Merit level or above, or an equivalent qualification and normally Grade C in English and Mathematics or equivalent.

Applicants must also demonstrate that they have a minimum of 40 hours of work experience in horticulture, which can be acquired prior to leaving school.

Progression opportunities and career destinations

This course may provide students with an opportunity to progress onto Foundation Degree in Horticulture programmes.

Students can follow careers with garden centres, nurseries, golf courses, landscape companies and local councils in a wide range of jobs. Other options include horticulture therapy, education and training or self employment.



Adam Ferguson

“

I grew up on our family farm near Ballymena and saw the potential to develop my own horticulture business. Through studying the Extended Diploma I have greatly increased my plant knowledge and learned to work to tight specifications in hard landscaping through taking part in Worldskills Landscape Gardening training and trials.

I've represented CAFRE at the RHS Tatton Park Flower Show and won a Silver Medal at The Skills Show in Birmingham. I was delighted to be presented with the First Trust Bank CAFRE Horticulture Student of the Year Award in 2014 and am now studying for my Foundation Degree in Horticulture at Greenmount.”

City & Guilds Level 3 Subsidiary Diploma in Horticulture (Amenity Horticulture)

This part-time course is aimed at those currently working in the amenity horticulture industry or those aspiring to join it. It runs for two years and offers students both the practical experience and the theory required to develop their career in horticulture. On completion of this course, students receive a Level 3 Subsidiary Diploma in Horticulture.

FACT FILE

Course duration:

Two years part-time
(one day per week)

Course location:

Greenmount Campus

Course Manager:

Caroline Mathers

Telephone:

028 9442 6677

Email:

caroline.mathers@dardni.gov.uk

Course content

The main areas of study are:

- Construction of hard landscape features
- Garden design and tree studies
- Machinery and turf culture
- Nursery stock production
- Plant and soil science (core subject)
- Plant identification and establishment
- Work experience

Students attend Greenmount one day per week from September to May over two years achieving 60 credits.

Entry requirements

Normally four GCSE passes at Grade C or above including English and Mathematics. Applicants must also demonstrate that they have a minimum of 40 hours work experience in horticulture, which can be acquired prior to leaving school. Normally applicants must be working in horticulture for a minimum of one day a week.

or
Level 2 Diploma in Horticulture at Merit level or above, or an equivalent qualification and normally Grade C in English and Mathematics or equivalent.

or
Applicants who can demonstrate significant relevant industry experience will also be considered. These applicants may be required to submit work-based evidence and undertake written assessments and/or practical competence tests as part of the assessment.

Progression opportunities and career destinations

This course may provide students with an opportunity to progress onto Foundation Degree in Horticulture programmes. Students can follow careers in garden centres, nurseries, golf courses, landscape companies and local authorities in a wide range of jobs. Other options include horticulture therapy, education and training or self-employment.

Students who complete only the first year of study may be eligible to be awarded the City & Guilds Level 3 Certificate in Horticulture.



Patricia O'Neill

“

I've always had a keen interest in growing plants and signed up for the Level 3 Subsidiary Diploma in Horticulture so I could develop my skills in horticulture. In first year, I studied plant and soil science, the basis for any good horticulture programme, and gained a thorough grounding in plant selection and use. This year I've chosen to study the Advanced Nursery Stock Production and Plant Propagation units and completed a project on renewable materials. It has been great to put much of what I've learned into practice in planning my own small nursery business.”



City & Guilds Level 3 Subsidiary Diploma in Horticulture (Landscape Maintenance)

This two year part-time course is specifically aimed at people maintaining parks and open spaces and those offering professional landscape maintenance services. On completion of this course, students receive a Level 3 Subsidiary Diploma in Horticulture.

FACT FILE

Course duration:

Two years (one day per week)

Course location:

Greenmount Campus

Course Manager:

Ciaran Mulholland

Telephone:

028 9442 6659

Email:

ciaran.mulholland@dardni.gov.uk

Course content

The main areas of study are:

- Constructing hard landscape features
- Investigative project
- Machinery operations
- Plant and soil science (core subject)
- Pruning trees and shrubs

Entry requirements

Normally applicants must be working in landscape maintenance for a minimum of one day a week and have a:

Level 2 Diploma in Horticulture or above, or an equivalent qualification and normally Grade C in English and Mathematics or equivalent.

or
Normally four GCSE passes at Grade C or above including English and Mathematics. Applicants must also demonstrate that they have a minimum of 40 hours work experience in horticulture, which can be acquired prior to leaving school.

or
Applicants who can demonstrate significant relevant industry experience will also be considered. These applicants may be required to submit work-based evidence and undertake written assessments and/or practical competence tests as part of the assessment.

Progression opportunities and career destinations

This course may provide students with an opportunity to progress onto a Certificate of Higher Education or Foundation Degree programme, where there is a specific landscape pathway offered.



Derek Riddles

“

I'm studying on the second year of the Landscaping course. I have been able to apply things I have learned on the course in my workplace, at the University of Ulster, Magee Campus, which has been beneficial to both me and my work colleagues. The facilities at Greenmount campus are excellent and the staff are approachable, friendly and helpful. I would recommend Greenmount to anyone wanting to further their knowledge and career in horticulture.”



City & Guilds Level 3 Subsidiary Diploma in Horticulture (Sports Turf Management)

This two year part-time course develops the practical skills and underpinning knowledge related to working in the sports turf sector. It is specifically aimed at people employed in maintaining sports turf and is ideal for those who have already completed a Level 2 qualification in sports turf and wish to further develop their career. On completion of this course, students receive a Level 3 Subsidiary Diploma in Horticulture.

FACT FILE

Course duration:

Two years (one day per week)

Course location:

Greenmount Campus

Course Manager:

Ciaran Mulholland

Telephone:

028 9442 6659

Email:

ciaran.mulholland@dardni.gov.uk

Course content

The main areas of study are:

- Investigative project
- Irrigation and soil drainage
- Machinery operations
- Management of golf surfaces or winter games surfaces
- Plant and soil science (core subject)
- Sports turf construction

Entry requirements

Normally applicants must be working within the sports turf sector for a minimum of one day a week and have a:

Level 2 qualification in sports turf or an equivalent qualification and normally Grade C in English and Mathematics or equivalent.

or
Normally four GCSE passes at Grade C or above including English and Mathematics. Applicants must also demonstrate that they have a minimum of 40 hours work experience in horticulture, which can be acquired prior to leaving school.

or
Applicants who can demonstrate significant relevant industry experience will also be considered. These applicants may be required to submit work-based evidence and undertake written assessments and/or practical competence tests as part of the assessment.

Progression opportunities and career destinations

This course may provide students with an opportunity to progress onto a Certificate of Higher Education or Foundation Degree programmes, where there is a specific sports turf pathway offered.



Niall Trainor

“

I work at The Royal County Down Golf Club, which is one of the most beautiful Links courses in the world, nestled in the Murlough Nature Reserve. Working on the course it's really important to know what you're doing, so I'm studying for a qualification that will equip me with the knowledge to go a great job. I'm going to be learning about soil drainage, maintaining the greens and constructing sports greens, all vital in the day to day care of our greens at our Club. The sports turf facilities at Greenmount Campus offer at great place to learn off the job.”

City & Guilds Level 2 Diploma in Horticulture

This course may be studied over one year full-time or one day per week over two years. It provides students with a wide range of basic skills in horticulture. Students are taught mainly through practical based tuition in the ornamental gardens, woodlands, glasshouses and sports turf areas on campus. Work experience is an essential part of the programme.

FACT FILE

Course duration:

One year (4 days/week)
or two years (1 day/week)

Course location:

Greenmount Campus

Course Manager:

Caroline Mathers

Telephone:

028 9442 6677

Email:

caroline.mathers@dardni.gov.uk

Course content

The main areas of study are:

- Amenity turf
- Nursery stock and protected cropping
- Outdoor plant establishment
- Plant science
- Setting out from a plan
- Work experience

Entry requirements

Normally two Grade Cs or three Grade Ds at GCSE, including English and Mathematics. Students who have not attained a Grade C or above in English and Mathematics at GCSE or an equivalent qualification have to complete Essential Skills in Numeracy and Literacy.

Applicants must also demonstrate that they have a minimum of 40 hours of work experience in horticulture, which can be acquired prior to leaving school.

Progression opportunities and career destinations

This course may provide students with an opportunity to progress onto the City & Guilds Level 3 Extended Diploma in Horticulture. Students can follow career paths in landscape, sports turf, nursery and retail sectors.



PJ O'Neill

“

I wanted an outdoor career and studied the Level 2 Diploma in Horticulture to try my hand at a wider range of horticulture skills. Work experience was an essential part of the course and we were taught how to complete job applications and approach interviews. I was fortunate to get a part-time job with a local landscape contractor at weekends while I was still at Greenmount and I now work full-time with the business.

I was awarded the prize for First Overall on Awards Day and plan to return to study for the Level 3 Subsidiary Diploma on a day release basis. For me it is ideal to be able to keep my job and be able to study for a higher qualification at the same time.”

Level 2 Apprenticeship in Amenity Horticulture/ City & Guilds Level 2 Diploma in Work-based Horticulture (Parks, Gardens and Green Spaces)

This course provides valuable in-service training for those already employed or self-employed in the amenity horticulture sector. It is primarily designed for those who are already working in parks maintenance or delivering professional landscape maintenance services. Students attend college on a day-release basis over 12-18 months.

FACT FILE

Course duration:

12-18 months
(one day per week)

Course location:

Greenmount Campus

Course Manager:

Ciaran Mulholland

Telephone:

028 9442 6659

Email:

ciaran.mulholland@dardni.gov.uk

Course content

The main areas of study are:

- Clearing horticultural and landscaping sites
- Control of pests, diseases and disorders
- Effective working relationships
- Health and safety
- Maintenance of amenity turf
- Personal development
- Plant identification
- Pruning
- Site preparation, seeding and planting
- Use of tools and equipment

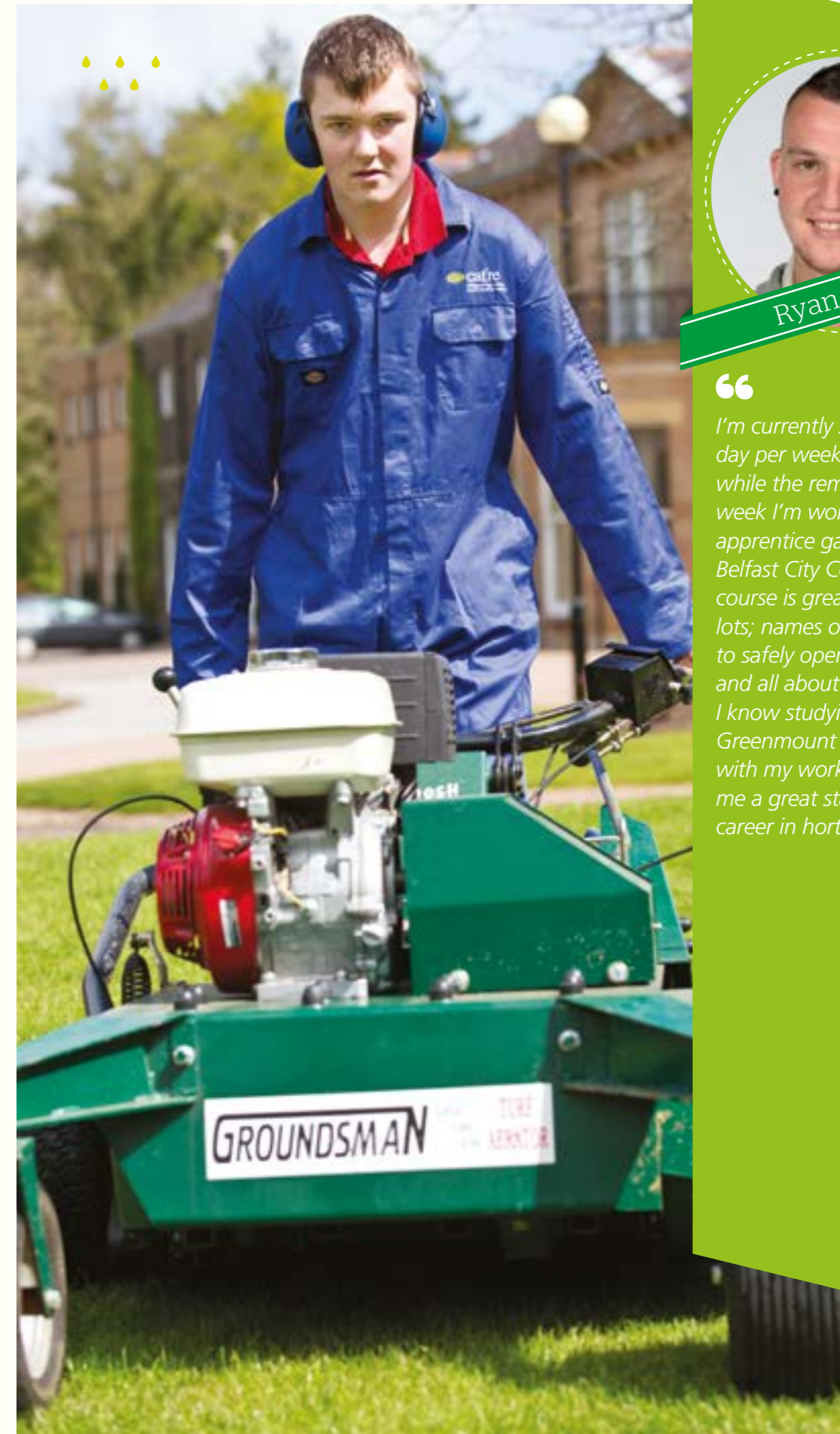
Students attend college one day per week from late September for 12-18 months to develop their knowledge, understanding and competence levels. Candidates must develop their skills in the workplace, gather supportive evidence for assessment of practical skills and complete a personal portfolio.

Entry requirements

Applicants must be employed or self-employed in a relevant job within the amenity horticulture sector for at least three days per week and should normally have two Grade Cs or three Grade Ds at GCSE including English and Mathematics. Students who have not attained a Grade C or above in English and Mathematics at GCSE or equivalent will be encouraged to complete Essential Skills in Numeracy and Literacy.

Progression opportunities and career destinations

This course may provide students with an opportunity to progress onto the Level 3 Subsidiary Diploma in Horticulture. The Level 2 qualification produces skilled operatives who can quickly become team leaders within the grounds care and amenity horticulture sectors. This qualification may allow students to obtain better rates of pay, permanent positions or alternative job roles within the industry.



Ryan Bright

“ I’m currently studying one day per week on the course while the remainder of the week I’m working as an apprentice gardener with Belfast City Council. The course is great. I’m learning lots; names of plants, how to safely operate machinery and all about planting. I know studying at Greenmount combined with my work will give me a great start in my career in horticulture.”

Level 2 Apprenticeship in Amenity Horticulture/ City & Guilds Level 2 Diploma in Work-based Horticulture (Sports Turf-Greenkeeper)

This course provides valuable in-service training for those already employed or self-employed in the sports turf sector. It is primarily designed for those who are already working as trainee and assistant greenkeepers or grounds persons. Students attend college on a day-release basis over 12-18 months.

FACT FILE

Course duration:

12-18 months
(one day per week)

Course location:

Greenmount Campus

Course Manager:

Ciaran Mulholland

Telephone:

028 9442 6659

Email:

ciaran.mulholland@dardni.gov.uk

Course content

The main areas of study are:

- Effective working relationships
- Health and safety
- Maintain the health and condition of sports turf surfaces
- Personal development
- Repair of sports turf surfaces
- Site preparation, seeding and planting
- Tractor operation
- Use of machinery and equipment

Students attend college one day per week from late September for 12-18 months to develop their knowledge, understanding and competence levels. Candidates must develop their skills in the workplace, gather supportive evidence for assessment of practical skills and complete a personal portfolio.

Entry requirements

Applicants must be employed or self-employed in a relevant job within the sports turf sector for at least three days per week and should normally have two Grade Cs or three Grade Ds at GCSE including English and Mathematics. Students who have not attained a Grade C or above in English and Mathematics at GCSE or equivalent, will be encouraged to complete Essential Skills in Numeracy and Literacy.

Progression opportunities and career destinations

This course may provide students with an opportunity to progress onto the Level 3 Subsidiary Diploma in Horticulture (Sports Turf Management). The Level 2 qualification produces skilled operatives who can quickly become key workers within the grounds care and sportsturf sectors. This qualification may allow students to obtain better rates of pay, permanent positions or alternative job roles within the industry.



Matthew Cromie

“

With all the recent press coverage that the game of golf has been getting, what better area to enter work and study than sports turf? I lead an active lifestyle and love being outdoors so to find a job that I can develop myself and love going to was a great catch for me! I'm studying on the Apprenticeship programme which allows me to earn and learn at the same time. The horticulture facilities at Greenmount are fantastic and it's a real pleasure heading off to class in the outdoors.”

Greenkeeping Cadetship programme.

CAFRE, in association with the Golfing Union of Ireland (GUI) Ulster Branch, offers a Greenkeeping Cadetship programme.

The programme is aimed at people aged 18-24 who have a keen interest in developing a career in greenkeeping. The GUI supports two or three greenkeeping students per year with a generous financial bursary. Each year up to three cadets are selected on the basis of competitive interview by a panel of GUI and CAFRE representatives. The Cadetship programme runs from early September to the following May each year.

Applicants must have relevant practical experience, a minimum of four GCSEs at Grade C including Mathematics and English and a keen interest in the game of golf. Successful candidates complete the City & Guilds Level 2 Diploma in Work-based Horticulture (Sports Turf-Greenkeeper) programme and gain practical experience while working on the sports turf areas and campus grounds.



Ronan McLarnon

“

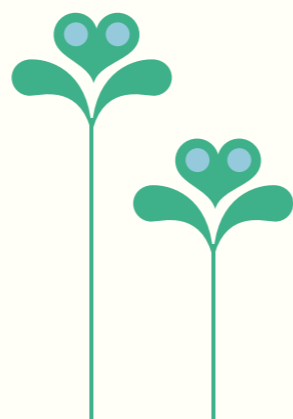
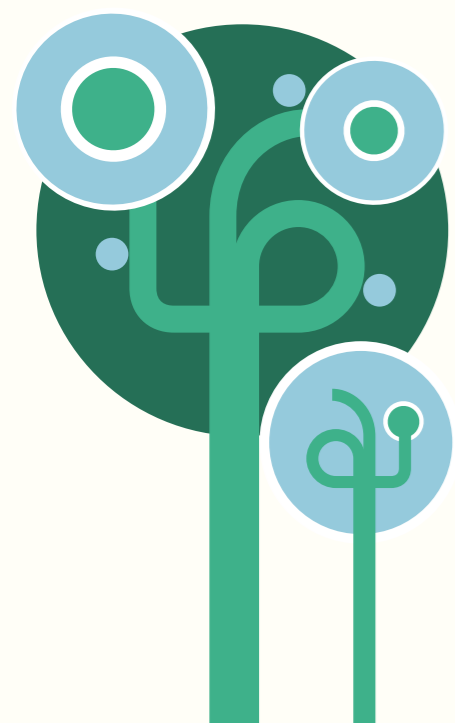
Having completed a general horticulture qualification in June, during which I got some greenkeeping experience as part of a work placement, I decided to apply for the GUI Cadetship programme. I really enjoy working with greens and feel that the Cadetship programme will give me the opportunity to develop my skills and knowledge and open up doors for me for employment within the sport turf industry.”

VETERINARY NURSING



COURSES

- Level 3 Apprenticeship in Veterinary Nursing/City & Guilds Level 3 Diploma in Veterinary Nursing
- Level 2 Apprenticeship Animal Nursing Assistants/ Level 2 Certificate for Animal Nursing Assistants



Industry insights

Greenmount offers two Veterinary Nursing courses designed to prepare students for careers in the veterinary nursing/animal care profession.

The courses provide the appropriate knowledge to complement the practical skills acquired while working in a veterinary practice and also help student nurses develop their teamwork and interpersonal skills.



Julia Burges

"I have always wanted to be a Veterinary Nurse. I grew up in a house filled with pets. We had a collection of five dogs and five cats, all acquired as stray or rescue animals, so it was no surprise to me that I developed a love of working with animals.

When I heard about the Level 3 Veterinary Nursing course at Greenmount I got in touch with the college and decided to apply. During my training I worked in The Brook Veterinary Practice, one of the RCVS approved training practices, where I am still employed. I love everything about my job from general kennel work, to taking x-rays and treating animals in recovery.

Veterinary nursing is a wonderful career and I would recommend it to anyone who enjoys working with animals and of course people. The courses at Greenmount are fantastic preparation for work and provide a sound basis of theory to build upon. I would advise anyone interested in a career in veterinary nursing to just go for it."



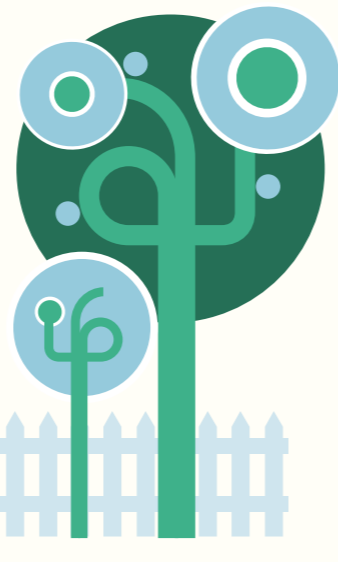
Our Veterinary Nursing facilities

Greenmount Campus provides an attractive learning and living environment for all students. Formal classes are taught in a specialist veterinary nursing classroom fitted with all the equipment necessary for small animal veterinary nursing, surgical nursing and diagnostic imaging.

The campus has a laboratory equipped with laboratory analysers, refractometers, microscopes, centrifuges and commercial test kits.

Veterinary nursing students have access to the Greenmount Resource Centre with its extensive library, work rooms and study areas.

The campus also has excellent computer facilities for students with the most up to date on-line teaching materials available.



Level 3 Apprenticeship in Veterinary Nursing/City & Guilds Level 3 Diploma in Veterinary Nursing

This course is designed to prepare students for careers in veterinary nursing/animal care working in veterinary practices.

FACT FILE

Course duration:

Two years

Course location:

Greenmount Campus

Course Manager:

Lorna Christie

Telephone:

028 9442 6700

Email:

lorna.christie@dardni.gov.uk

Course content

Year 1 consists of 80 teaching days, delivered over two days per week, covering:

- Anaesthesia
- Anatomy and physiology
- Applied animal health and husbandry
- Diagnostic imaging
- Health and safety
- Infection control

Year 2 consists of seven taught weeks covering:

- Applied peri-operative equine/small animal nursing
- Applied nursing of sick small animals
- Developing professional veterinary nursing practice
- Emergency and critical care of small animals
- Supporting anaesthetised patients

Entry requirements

Five GCSE passes at Grade C or above including English Language, Mathematics and a Science subject. Applicants should be at least 16 years or over and be employed in an approved veterinary practice.

Students not following the Apprenticeship pathway will incur validation and registration fees. For further information please contact the Course Manager.

Progression opportunities and career destinations

This course provides students with the opportunity to progress onto a Diploma in Advanced Veterinary Nursing.



Karen Horner

“

After school I went to university and completed a degree. During this time I also worked part-time at private boarding kennels. I loved this work and on graduation I became manager of the kennels. It was then that I decided this was my true vocation so I applied to Greenmount. I now work for Cornerstone Veterinary Clinic. I really enjoy the mix of practical and theoretical learning on the course. The highlight of the course was a visit to Slovenia where I had the opportunity to work with zoo vets. It was a fantastic experience and gave me such a useful insight into this aspect of veterinary nursing. I would recommend a veterinary nursing career to anyone interested in animal care.”

Level 2 Apprenticeship Animal Nursing Assistants/ Level 2 Certificate for Animal Nursing Assistants

The aim of this Level 2 Certificate in Animal Nursing Assistant course is to equip students with the skills and knowledge required to support qualified veterinary staff and prepare students for careers as animal nursing assistants in veterinary practices.

FACT FILE

Course duration:

One year

Course location:

Greenmount Campus

Course Manager:

Lorna Christie

Telephone:

028 9442 6700

Email:

lorna.christie@dardni.gov.uk

Course content

The Animal Nursing Assistant course is delivered on a day-release basis over one academic year. The remainder of the time is spent working in a veterinary practice.

The course covers:

- Basic practical management and reception skills
- Companion animal anatomy and physiology
- Control and restraint of animals
- Maintenance of animal accommodation
- Principles of infection control
- The care of ill and injured animals within a veterinary practice
- The husbandry and welfare of domestic animals

Students who have not attained a Grade C or above in English and Mathematics at GCSE or equivalent qualifications, have to complete Essential Skills in Numeracy and Literacy.

Entry requirements

Normally two Grade Cs or three Grade Ds including English and Mathematics. Applicants must be at least 16 years or over, and employed for at least 20 hours/week in a veterinary practice.

Students not following the Apprenticeship pathway will incur validation and registration fees. For further information please contact the Course Manager.

Progression opportunities and career destinations

Students are normally already employed in veterinary practices and laboratories. Students who successfully complete the Animal Nursing Assistant course may progress onto the Level 3 Diploma in Veterinary Nursing course.



Shirley Kelly

“

I have always loved working with animals and have always had lots of animals at home. When I left school I trained and worked as a dental nurse, but knew that one day I would work with animals. I decided to find out about the courses available, so I chatted with both staff and students at CAFRE and decided, 'yes', this is what I really want to do for a career. I found work in Auburn Veterinary Clinic and applied for the course. I have learnt so much in such a short time and I am really keen to go on and do the Level 3 course. I love coming into the college! There is a lovely friendly atmosphere and the staff are brilliant. They are always ready to go the extra mile in providing support and encourage me to find out things that go beyond the syllabus. It is great learning new things about animals that I didn't already know.”



Important and legal information

Terms and Conditions

As a condition of enrolment all students must abide by and submit to the rules and procedures specified in the College Regulations, Students' Charter and the Joining Instructions. A copy of the current rules, regulations and information for students will be issued to all prospective students at or before enrolment.

The College will make all reasonable endeavours to deliver its courses in accordance with the descriptions set out in this prospectus. The courses offered are continually being improved through review and quality assurance processes by the College and Awarding Bodies. The College therefore reserves the right to make variations to the contents or methods of delivery of courses, if such actions are reasonably considered necessary by the College in the context of its wider provision.

Policy on Equal Opportunities

The College is fully committed to providing equality of opportunity. It is our policy to ensure that everyone associated with the College is treated equitably, regardless of religious belief, gender, whether or not they have a disability, race, political opinion, age, marital status, sexual orientation, or whether or not they have dependant(s).

CAFRE welcomes applications from students aged over 21 years on 1 October of the year of entry. Each student is considered on his/her individual merit, taking into account academic qualifications and other relevant experience. Evidence of recent academic study is particularly relevant to applications for Degree courses. The College welcomes applications from students who have successfully completed relevant Access courses.

Special needs

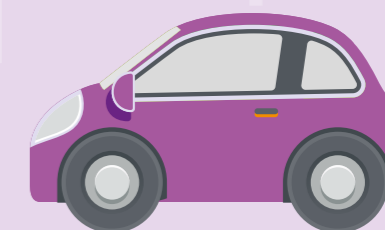
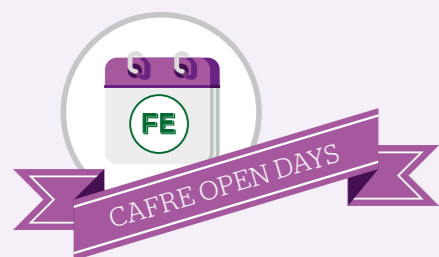
CAFRE strives to provide an inclusive learning environment and welcomes and encourages applications from persons with a disability. Applicants are advised to disclose learning needs or disabilities on their application form to give CAFRE an understanding of their support needs and any reasonable adjustments that might be required. Disability will not be considered as part of the selection process. All courses offered at CAFRE have an element of application in a practical situation.

Complaints procedures

A booklet entitled Customer Services Standards is available from DARD offices and sets out the standards to which we operate with regard to all our customers. For example, course applications will be acknowledged within two working days and outcomes of College interviews will be issued within five working days of the interview.

Written complaints or comments should be sent to the Customer Services Department at any of the campuses. If you feel that we have not dealt with your comment, complaint or suggestion to your satisfaction you can write to the Complaints Officer at any of the campuses.





CAFRE Open Days

If you're considering coming to CAFRE, you're the type of person who is interested in a hands-on course that will give you the best possible preparation for a job in industry.

Good practical facilities are vital to allow you to apply your knowledge and develop the skills to give you an advantage over the competition.

That's why we'd like to invite you to visit our campuses to see the facilities we use to train our students for successful careers. You or your school can organise a special visit or you can attend one of our Open Days.

At our Open Days you'll find out about specific courses and their career opportunities, tour the facilities and accommodation and meet students and staff.

During August, when you know your exam results, we hold Careers Advice Evenings to let you confirm or reconsider your course options.

Spring - Open Days

Enniskillen Campus	Saturday 18th April, 2015
Loughry Campus	Tuesday 21st April, 2015
Greenmount Campus	Wednesday 22nd April, 2015

Summer - Careers Advice Evenings

Enniskillen Campus	Thursday 20th August, 2015
Loughry Campus	Thursday 20th August, 2015
Greenmount Campus	Thursday 20th August, 2015



**Enniskillen Campus
BT74 4GF**

Where you'll receive training in equine courses, is located two kilometres from Enniskillen, Co Fermanagh, on the A32 Irvinestown to Omagh Road.



**Greenmount Campus
BT41 4PS**

Focuses on agriculture and horticulture courses and is located three kilometres from Antrim town just off the A26 Dublin Road.



**Loughry Campus
BT80 9AA**

Provides education on food courses, is located on the A29 Dungannon Road three kilometres from Cookstown, Co Tyrone.



**Enniskillen Campus**

2 Mullaghmeen Road
Levagh
Enniskillen
BT74 4GF

Greenmount Campus

45 Tirgracy Road
Muckamore
Antrim
BT41 4PS

Loughry Campus

76 Dungannon Road
Cookstown
BT80 9AA

All course enquiries
Freephone: 0800 028 4291
Email: enquiries@cafre.ac.uk
Website: www.cafre.ac.uk

If you require this publication
in an alternative format please
contact College Administration on
Freephone 0800 028 4291 quoting
reference FE Prospectus 2015



www.cafre.ac.uk

ISBN: 978-1-84807-490-3

Printed on recycled paper – Revive 100 pure white silk,
produced using 100% recycled waste at a mill that
has been awarded the ISO14001 certificate
for environmental management.

The pulp is bleached using a totally chlorine
free (TCF) process.

Discover CAFRE on Facebook

Contents

